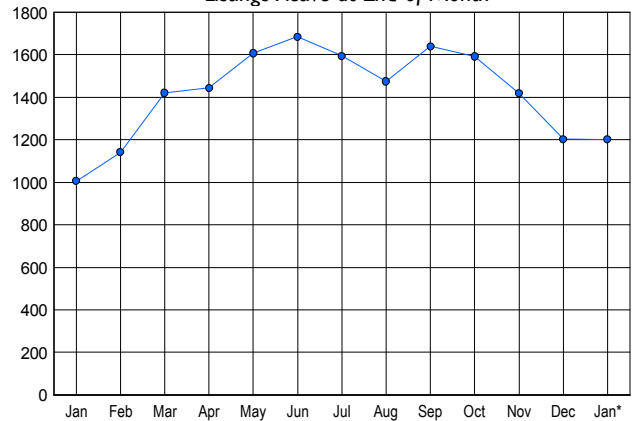


### LISTINGS

Price Range	New This Month			Total Actives		
	2007	2006	% Change	2007	2006	% Change
0 - 149,999	7	17	-58.8	22	32	-31.3
150,000 - 199,999	72	58	24.1	204	75	172.0
200,000 - 299,999	112	135	-17.0	215	214	0.5
300,000 - 399,999	110	135	-18.5	250	207	20.8
400,000 - 499,999	80	99	-19.2	180	172	4.7
500,000 - 599,999	60	64	-6.3	134	129	3.9
600,000 - 699,999	38	33	15.2	68	71	-4.2
700,000 - 799,999	16	18	-11.1	43	30	43.3
800,000 - 899,999	5	7	-28.6	20	21	-4.8
900,000 - 999,999	6	2	200.0	16	15	6.7
1,000,000 - 1,249,999	4	6	-33.3	13	13	0.0
1,250,000 - 1,499,999	5	5	0.0	13	10	30.0
1,500,000 +	7	5	40.0	23	17	35.3
<b>TOTALS</b>	<b>522</b>	<b>584</b>	<b>-10.6</b>	<b>1201</b>	<b>1006</b>	<b>19.4</b>

### INVENTORY TREND

Listings Active at End of Month

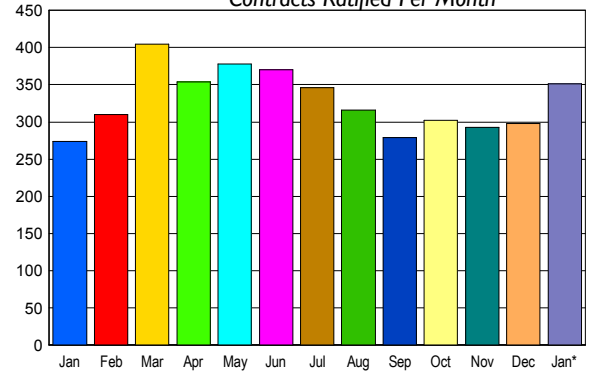


### CONTRACTS

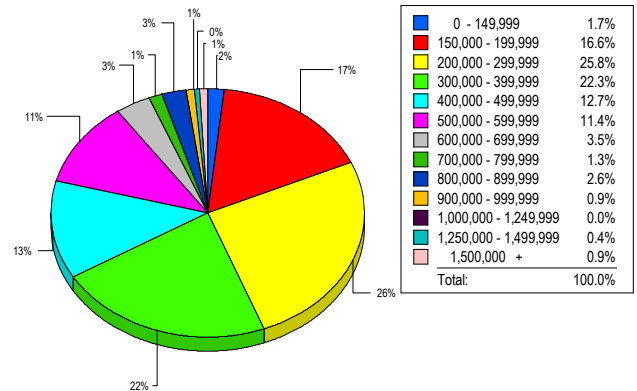
Price Range	New This Month			Year-To-Date		
	2007	2006	% Change	2007	2006	% Change
0 - 149,999	8	10	-20.0	8	10	-20.0
150,000 - 199,999	54	25	116.0	54	25	116.0
200,000 - 299,999	85	67	26.9	85	67	26.9
300,000 - 399,999	76	77	-1.3	76	77	-1.3
400,000 - 499,999	57	43	32.6	57	43	32.6
500,000 - 599,999	28	25	12.0	28	25	12.0
600,000 - 699,999	22	8	175.0	22	8	175.0
700,000 - 799,999	9	9	0.0	9	9	0.0
800,000 - 899,999	3	3	0.0	3	3	0.0
900,000 - 999,999	2	3	-33.3	2	3	-33.3
1,000,000 - 1,249,999	2	2	0.0	2	2	0.0
1,250,000 - 1,499,999	1	1	0.0	1	1	0.0
1,500,000 +	4	1	300.0	4	1	300.0
<b>TOTALS</b>	<b>351</b>	<b>274</b>	<b>28.1</b>	<b>351</b>	<b>274</b>	<b>28.1</b>

### SALES TREND

Contracts Ratified Per Month



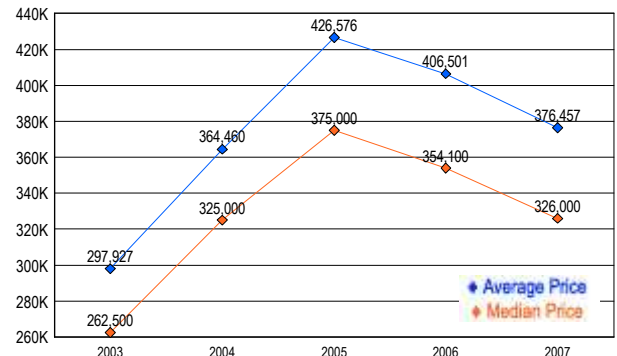
### MARKET BY PRICE RANGE



### SETTLEMENTS

Price Range	New This Month			Year-To-Date		
	2007	2006	% Change	2007	2006	% Change
0 - 149,999	4	9	-55.6	4	9	-55.6
150,000 - 199,999	38	14	171.4	38	14	171.4
200,000 - 299,999	59	39	51.3	59	39	51.3
300,000 - 399,999	51	51	0.0	51	51	0.0
400,000 - 499,999	29	31	-6.5	29	31	-6.5
500,000 - 599,999	26	27	-3.7	26	27	-3.7
600,000 - 699,999	8	9	-11.1	8	9	-11.1
700,000 - 799,999	3	4	-25.0	3	4	-25.0
800,000 - 899,999	6	2	200.0	6	2	200.0
900,000 - 999,999	2	0	200.0	2	0	-200.0
1,000,000 - 1,249,999	0	1	-100.0	0	1	-100.0
1,250,000 - 1,499,999	1	2	-50.0	1	2	-50.0
1,500,000 +	2	3	-33.3	2	3	-33.3
<b>TOTALS</b>	<b>229</b>	<b>192</b>	<b>19.3</b>	<b>229</b>	<b>192</b>	<b>19.3</b>

### AVERAGE & MEDIAN PRICE



DATA SOURCE: Metropolitan Regional Information Systems, Inc. (MRIS)

NOTES: Properties not listed through this Multiple Listing Service are not reflected. The term "sales" represents ratified purchase contracts. Current year information is preliminary and subject to revision. Current year- to- date contract information may not equal the sum of the monthly contract totals reported in

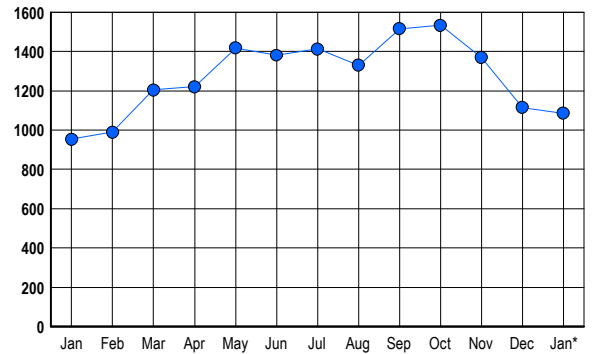


## LISTINGS

Prices Range	New This Month			Total Actives		
	2007	2006	% Change	2007	2006	% Change
0 - 149,999	2	6	-66.7	2	5	-60.0
150,000 - 199,999	8	13	-38.5	14	12	16.7
200,000 - 299,999	56	60	-6.7	120	101	18.8
300,000 - 399,999	94	89	5.6	214	157	36.3
400,000 - 499,999	73	96	-24.0	217	184	17.9
500,000 - 599,999	63	74	-14.9	169	138	22.5
600,000 - 699,999	37	42	-11.9	85	83	2.4
700,000 - 799,999	31	39	-20.5	61	63	-3.2
800,000 - 899,999	31	27	14.8	47	37	27.0
900,000 - 999,999	12	16	-25.0	32	24	33.3
1,000,000 - 1,249,999	10	11	-9.1	26	29	-10.3
1,250,000 - 1,499,999	11	14	-21.4	21	30	-30.0
1,500,000 +	29	32	-9.4	78	90	-13.3
<b>TOTALS</b>	<b>457</b>	<b>519</b>	<b>-11.9</b>	<b>1086</b>	<b>953</b>	<b>14.0</b>

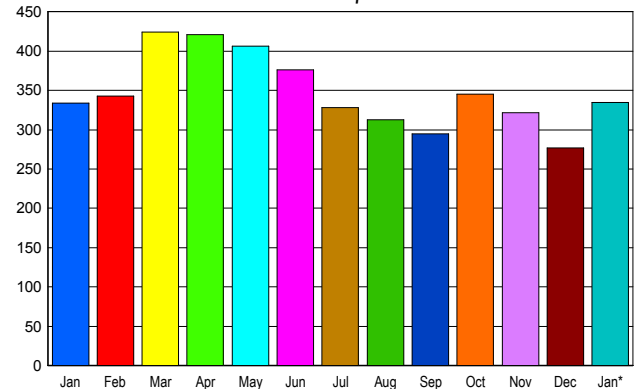
## INVENTORY TREND

Listings Active at End of Month



## SALES TREND

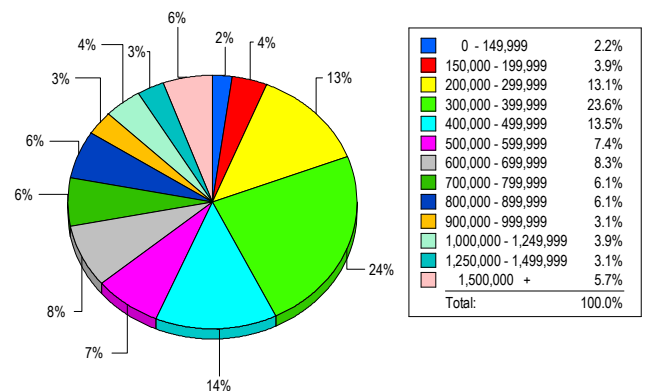
Contracts Ratified Per Month



## CONTRACTS

Price Range	New This Month			Year-To-Date		
	2007	2006	% Change	2007	2006	% Change
0 - 149,999	5	8	-37.5	5	8	-37.5
150,000 - 199,999	5	12	-58.3	5	12	-58.3
200,000 - 299,999	53	57	-7.0	53	57	-7.0
300,000 - 399,999	75	82	-8.5	75	82	-8.5
400,000 - 499,999	53	38	39.5	53	38	39.5
500,000 - 599,999	24	33	-27.3	24	33	-27.3
600,000 - 699,999	29	27	7.4	29	27	7.4
700,000 - 799,999	19	28	-32.1	19	28	-32.1
800,000 - 899,999	26	13	100.0	26	13	100.0
900,000 - 999,999	9	11	-18.2	9	11	-18.2
1,000,000 - 1,249,999	5	5	0.0	5	5	0.0
1,250,000 - 1,499,999	14	9	55.6	14	9	55.6
1,500,000 +	18	11	63.6	18	11	63.6
<b>TOTALS</b>	<b>335</b>	<b>334</b>	<b>0.3</b>	<b>335</b>	<b>334</b>	<b>0.3</b>

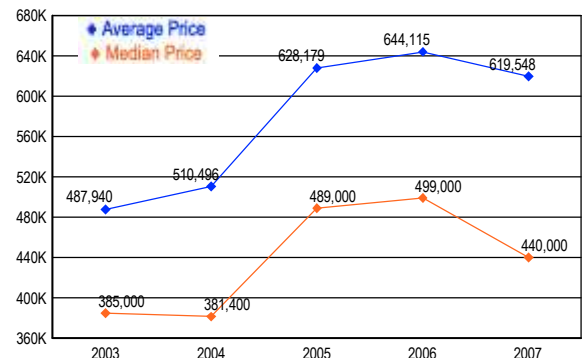
## MARKET BY PRICE RANGE



## SETTLEMENTS

Price Range	New This Month			Year-to-Date		
	2007	2006	% Change	2007	2006	% Change
0 - 149,999	5	1	400.0	5	1	400.0
150,000 - 199,999	9	13	-30.8	9	13	-30.8
200,000 - 299,999	30	32	-6.3	30	32	-6.3
300,000 - 399,999	54	47	14.9	54	47	14.9
400,000 - 499,999	31	29	6.9	31	29	6.9
500,000 - 599,999	17	17	0.0	17	17	0.0
600,000 - 699,999	19	20	-5.0	19	20	-5.0
700,000 - 799,999	14	18	-22.2	14	18	-22.2
800,000 - 899,999	14	10	40.0	14	10	40.0
900,000 - 999,999	7	17	-58.8	7	17	-58.8
1,000,000 - 1,249,999	9	6	50.0	9	6	50.0
1,250,000 - 1,499,999	7	5	40.0	7	5	40.0
1,500,000 +	13	12	8.3	13	12	8.3
<b>TOTALS</b>	<b>229</b>	<b>227</b>	<b>0.9</b>	<b>229</b>	<b>227</b>	<b>0.9</b>

## AVERAGE & MEDIAN PRICE



DATA SOURCE: Metropolitan Regional Information Systems, Inc. (MRIS)

NOTES: Properties not listed through this Multiple Listing Service are not reflected. The term "sales" represents ratified purchase contracts. Current year information is preliminary and subject to revision. Current year- to- date contract information may not equal the sum of the monthly contract totals reported in

# MONTGOMERY COUNTY

## Residential Market Report



# HOUSING REPORT

## CONDO & COOPS

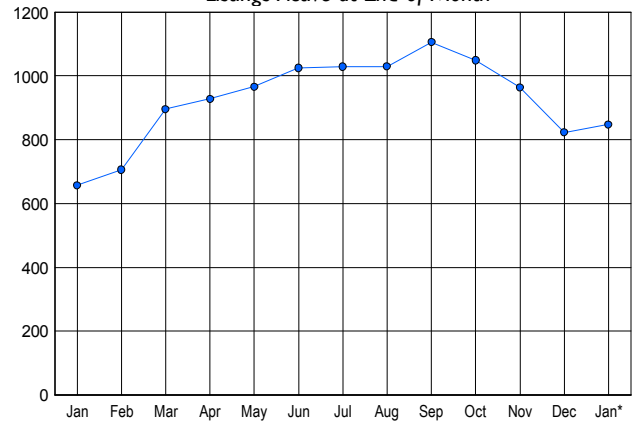
### January 2007

### LISTINGS

Price Range	New This Month			Total Actives		
	2007	2006	% Change	2007	2006	% Change
0 - 149,999	6	8	-25.0	19	25	-24.0
150,000 - 199,999	34	46	-26.1	75	55	36.4
200,000 - 299,999	158	175	-9.7	315	268	17.5
300,000 - 399,999	107	120	-10.8	230	191	20.4
400,000 - 499,999	41	40	2.5	108	69	56.5
500,000 - 599,999	19	11	72.7	43	20	115.0
600,000 - 699,999	21	6	250.0	27	12	125.0
700,000 - 799,999	7	3	133.3	13	7	85.7
800,000 - 899,999	2	2	0.0	5	4	25.0
900,000 - 999,999	2	1	100.0	5	1	400.0
1,000,000 - 1,249,999	2	2	0.0	2	2	0.0
1,250,000 - 1,499,999	1	0	100.0	3	0	0.0
1,500,000 +	0	1	-100.0	3	3	0.0
<b>TOTALS</b>	<b>400</b>	<b>415</b>	<b>-3.6</b>	<b>848</b>	<b>657</b>	<b>29.1</b>

### INVENTORY TREND

Listings Active at End of Month

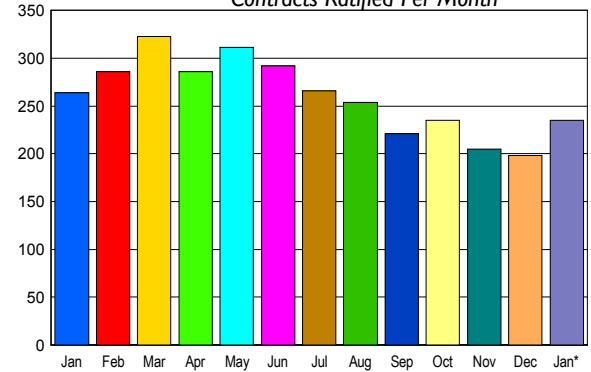


### CONTRACTS

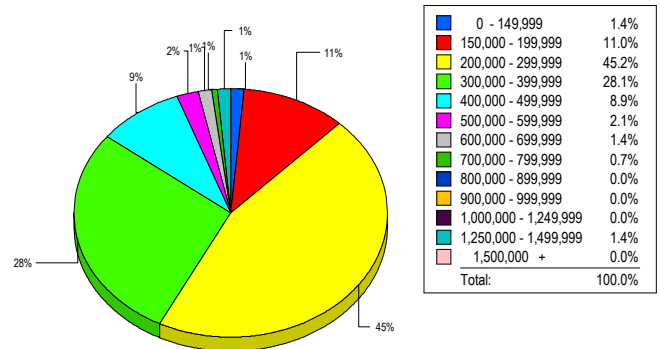
Price Range	New This Month			Year-To-Date		
	2007	2006	% Change	2007	2006	% Change
0 - 149,999	3	3	0.0	3	3	0.0
150,000 - 199,999	20	36	-44.4	20	36	-44.4
200,000 - 299,999	99	119	-16.8	99	119	-16.8
300,000 - 399,999	73	64	14.1	73	64	14.1
400,000 - 499,999	22	25	-12.0	22	25	-12.0
500,000 - 599,999	4	8	-50.0	4	8	-50.0
600,000 - 699,999	9	3	200.0	9	3	200.0
700,000 - 799,999	2	1	100.0	2	1	100.0
800,000 - 899,999	0	1	-100.0	0	1	-100.0
900,000 - 999,999	1	1	0.0	1	1	0.0
1,000,000 - 1,249,999	0	1	-100.0	0	1	-100.0
1,250,000 - 1,499,999	2	0	200.0	2	0	200.0
1,500,000 +	0	2	-100.0	0	2	-100.0
<b>TOTALS</b>	<b>235</b>	<b>264</b>	<b>-11.0</b>	<b>235</b>	<b>264</b>	<b>-11.0</b>

### SALES TREND

Contracts Ratified Per Month



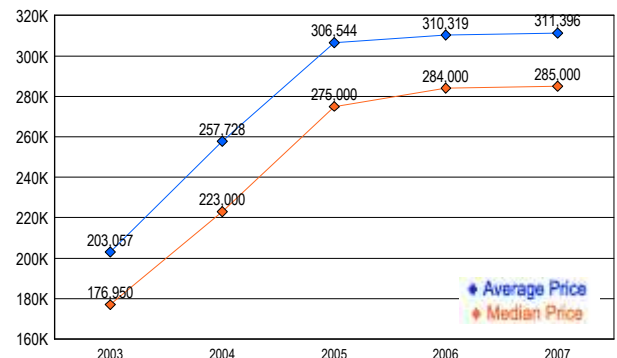
### MARKET BY PRICE RANGE



### SETTLEMENTS

Price Range	New This Month			Year-To-Date		
	2007	2006	% Change	2007	2006	% Change
0 - 149,999	2	2	0.0	2	2	0.0
150,000 - 199,999	16	13	23.1	16	13	23.1
200,000 - 299,999	66	71	-7.0	66	71	-7.0
300,000 - 399,999	41	55	-25.5	41	55	-25.5
400,000 - 499,999	13	17	-23.5	13	17	-23.5
500,000 - 599,999	3	7	-57.1	3	7	-57.1
600,000 - 699,999	2	3	-33.3	2	3	-33.3
700,000 - 799,999	1	3	-66.7	1	3	-66.7
800,000 - 899,999	0	0	0.0	0	0	0.0
900,000 - 999,999	0	0	0.0	0	0	0.0
1,000,000 - 1,249,999	0	1	-100.0	0	1	-100.0
1,250,000 - 1,499,999	2	0	200.0	2	0	-200.0
1,500,000 +	0	1	-100.0	0	1	-100.0
<b>TOTALS</b>	<b>146</b>	<b>173</b>	<b>-15.6</b>	<b>146</b>	<b>173</b>	<b>-15.6</b>

### AVERAGE & MEDIAN PRICE



DATA SOURCE: Metropolitan Regional Information Systems, Inc. (MRIS)

NOTES: Properties not listed through this Multiple Listing Service are not reflected. The term "sales" represents ratified purchase contracts. Current year information is preliminary and subject to revision. Current year-to-date contract information may not equal the sum of the monthly contract totals reported in

# MONTGOMERY COUNTY Residential Market Report



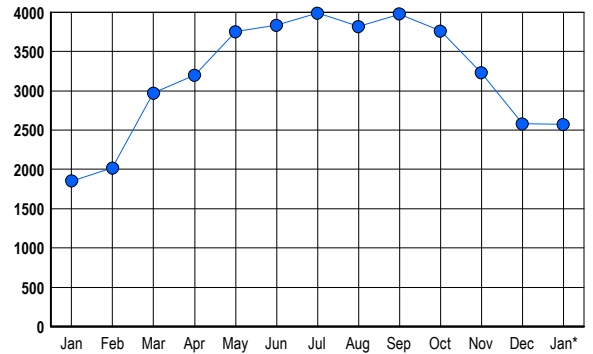
# HOUSING REPORT Single Family Homes January 2007

## LISTINGS

Prices Range	New This Month			Total Actives		
	2007	2006	% Change	2007	2006	% Change
0 - 149,999	0	4	-100.0	2	17	-88.2
150,000 - 199,999	2	0	200.0	3	3	0.0
200,000 - 299,999	67	59	13.6	122	70	74.3
300,000 - 399,999	228	285	-20.0	418	334	25.1
400,000 - 499,999	258	221	16.7	563	304	85.2
500,000 - 599,999	166	170	-2.4	417	292	42.8
600,000 - 699,999	125	128	-2.3	248	188	31.9
700,000 - 799,999	84	85	-1.2	187	124	50.8
800,000 - 899,999	47	52	-9.6	122	98	24.5
900,000 - 999,999	31	26	19.2	69	61	13.1
1,000,000 - 1,249,999	48	27	77.8	113	76	48.7
1,250,000 - 1,499,999	47	46	2.2	108	93	16.1
1,500,000 +	65	82	-20.7	199	191	4.2
<b>TOTALS</b>	<b>1168</b>	<b>1185</b>	<b>-1.4</b>	<b>2571</b>	<b>1851</b>	<b>38.9</b>

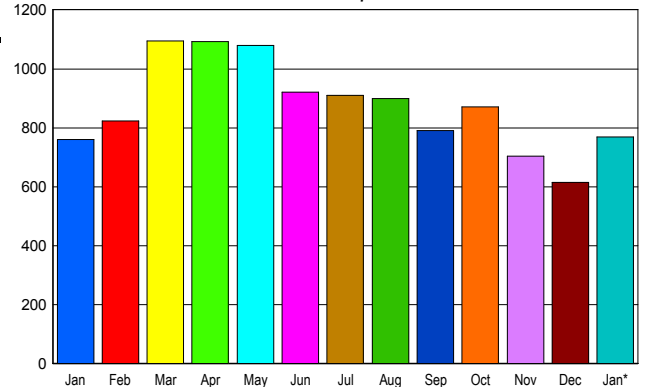
## INVENTORY TREND

Listings Active at End of Month



## SALES TREND

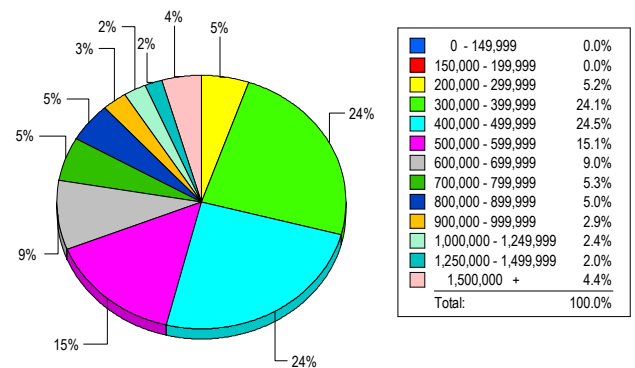
Contracts Ratified Per Month



## CONTRACTS

Price Range	New This Month			Year-To-Date		
	2007	2006	% Change	2007	2006	% Change
0 - 149,999	0	0	0.0	0	0	0.0
150,000 - 199,999	0	1	-100.0	0	1	-100.0
200,000 - 299,999	52	50	4.0	52	50	4.0
300,000 - 399,999	165	183	-9.8	165	183	-9.8
400,000 - 499,999	174	175	-0.6	174	175	-0.6
500,000 - 599,999	109	106	2.8	109	106	2.8
600,000 - 699,999	91	80	13.8	91	80	13.8
700,000 - 799,999	48	56	-14.3	48	56	-14.3
800,000 - 899,999	33	29	13.8	33	29	13.8
900,000 - 999,999	21	19	10.5	21	19	10.5
1,000,000 - 1,249,999	27	9	200.0	27	9	200.0
1,250,000 - 1,499,999	23	25	-8.0	23	25	-8.0
1,500,000 +	26	27	-3.7	26	27	-3.7
<b>TOTALS</b>	<b>769</b>	<b>760</b>	<b>1.2</b>	<b>769</b>	<b>760</b>	<b>1.2</b>

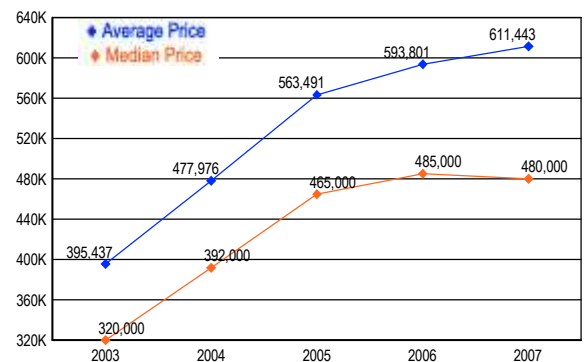
## MARKET BY PRICE RANGE



## SETTLEMENTS

Price Range	New This Month			Year-to-Date		
	2007	2006	% Change	2007	2006	% Change
0 - 149,999	0	1	-100.0	0	1	-100.0
150,000 - 199,999	0	0	0.0	0	0	0.0
200,000 - 299,999	28	29	-3.4	28	29	-3.4
300,000 - 399,999	131	146	-10.3	131	146	-10.3
400,000 - 499,999	133	148	-10.1	133	148	-10.1
500,000 - 599,999	82	67	22.4	82	67	22.4
600,000 - 699,999	49	53	-7.5	49	53	-7.5
700,000 - 799,999	29	38	-23.7	29	38	-23.7
800,000 - 899,999	27	18	50.0	27	18	50.0
900,000 - 999,999	16	7	128.6	16	7	128.6
1,000,000 - 1,249,999	13	15	-13.3	13	15	-13.3
1,250,000 - 1,499,999	11	9	22.2	11	9	22.2
1,500,000 +	24	26	-7.7	24	26	-7.7
<b>TOTALS</b>	<b>543</b>	<b>557</b>	<b>-2.5</b>	<b>543</b>	<b>557</b>	<b>-2.5</b>

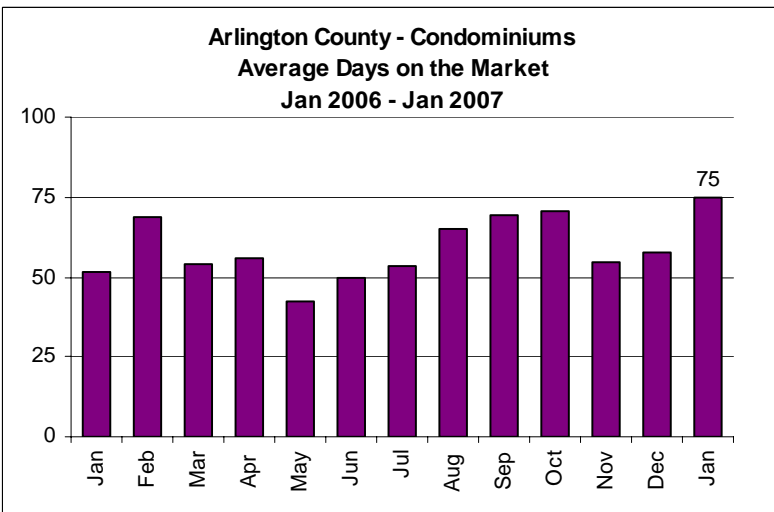
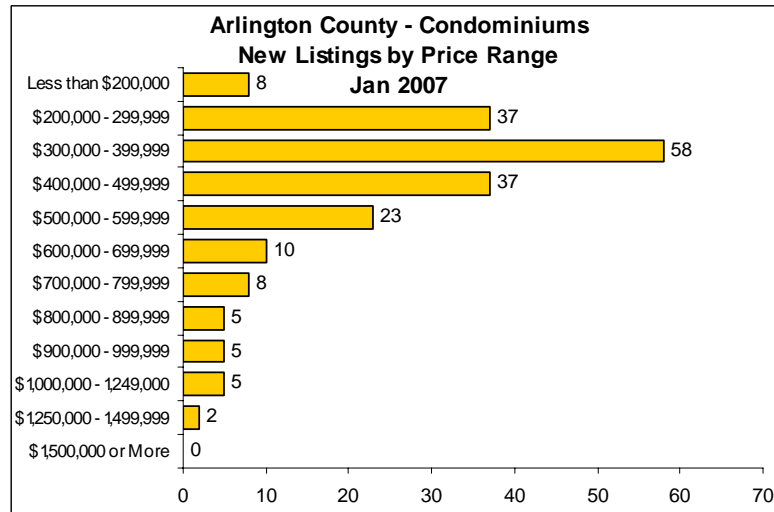
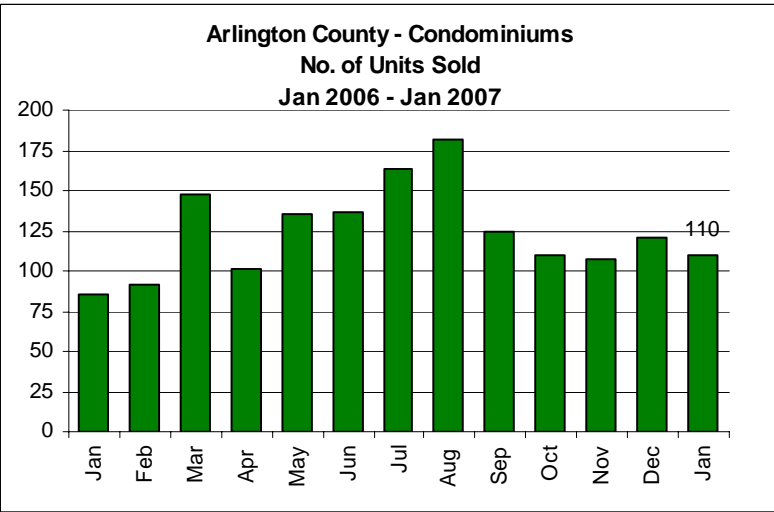
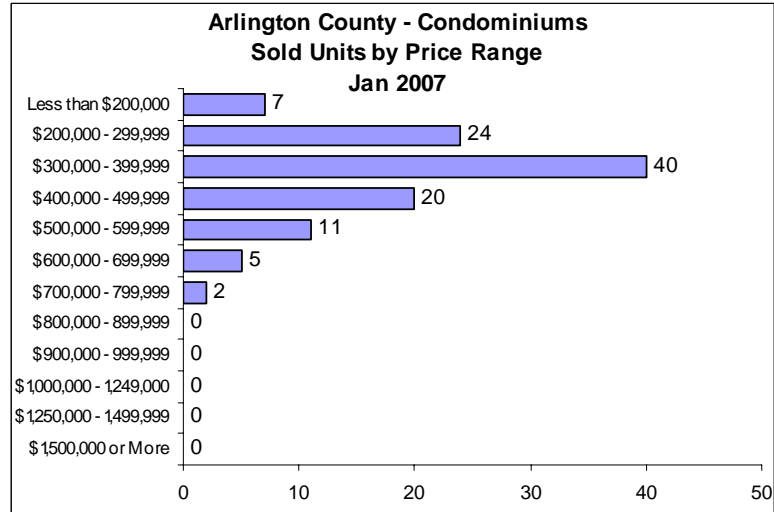
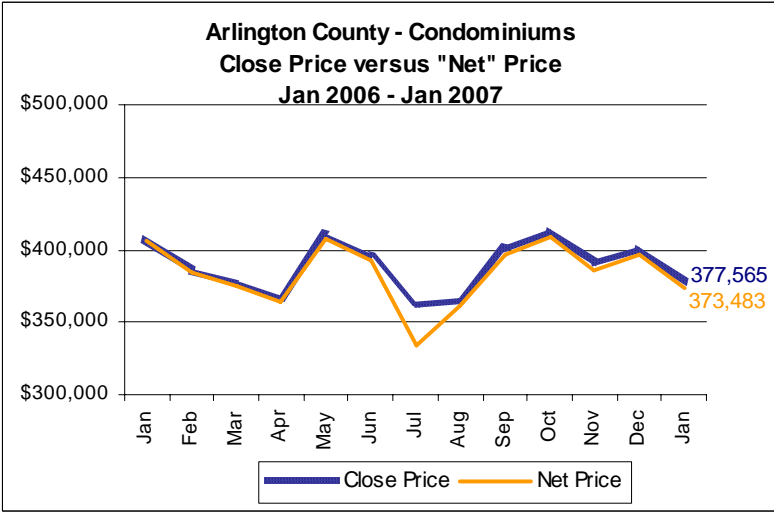
## AVERAGE & MEDIAN PRICE



DATA SOURCE: Metropolitan Regional Information Systems, Inc. (MRIS)

NOTES: Properties not listed through this Multiple Listing Service are not reflected. The term "sales" represents ratified purchase contracts. Current year information is preliminary and subject to revision. Current year- to- date contract information may not equal the sum of the monthly contract totals reported in

**Condominiums**

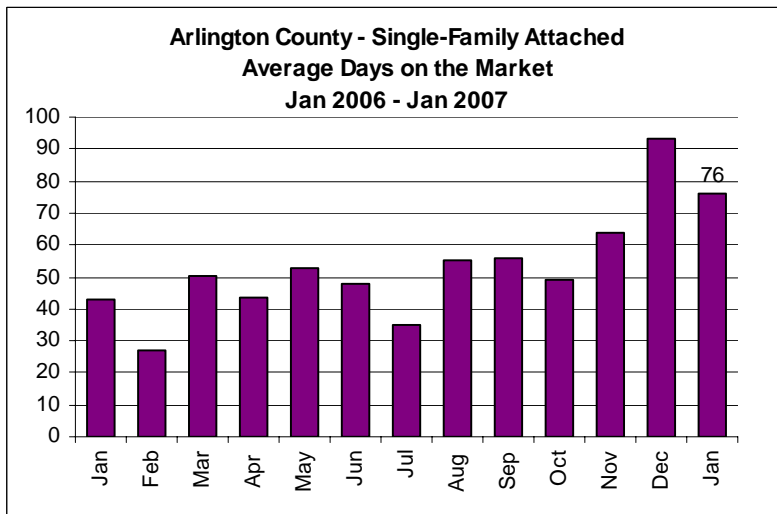
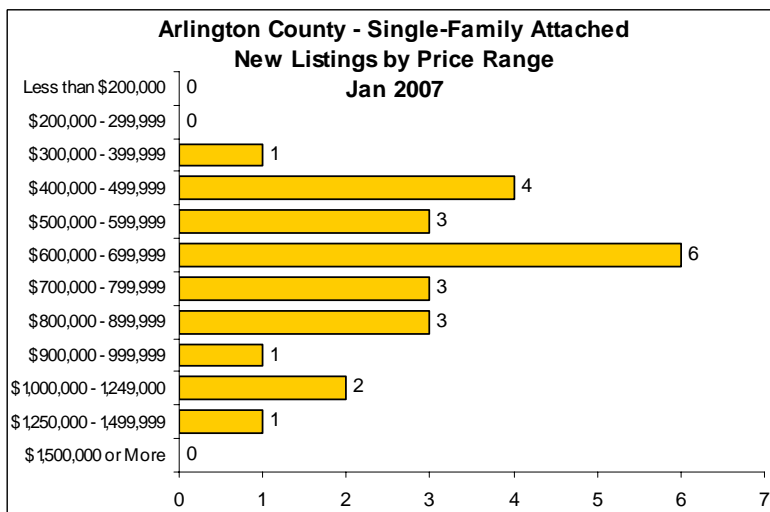
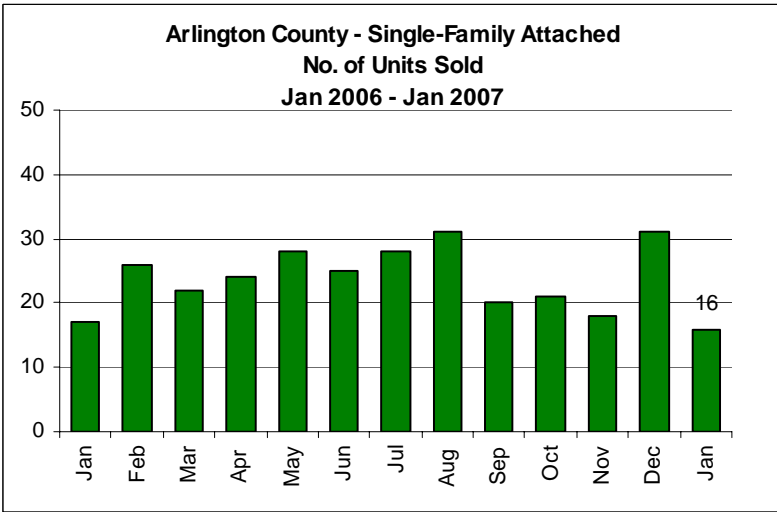
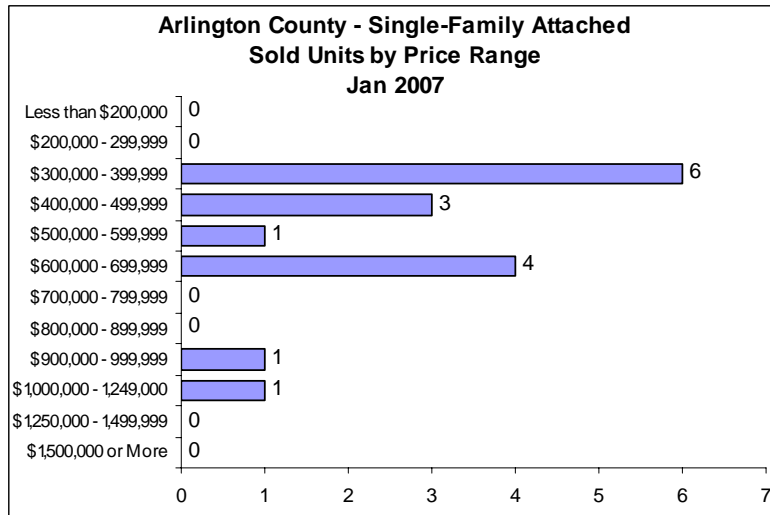
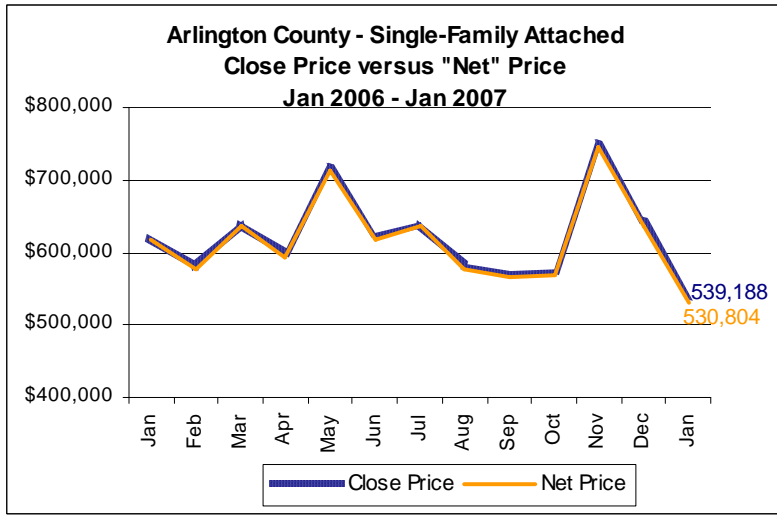


Data Source: Metropolitan Regional Information Systems, Inc. (MRIS)

NOTES: Properties not listed through this multiple listing service are not reflected. The term "net price" is equal to the close price (or settlement price) minus the amount of any seller subsidy. Sold units by price range are reported based on the close price (not the "net price.") Average days on the market are calculated from the multiple listing days on the market field (DOMP). Data presented in this report may differ slightly from other statistics based on MRIS data. Monthly data may be revised periodically as MRIS data are updated.

For more market statistics visit [www.nvar.com](http://www.nvar.com).

Single-Family Attached Homes

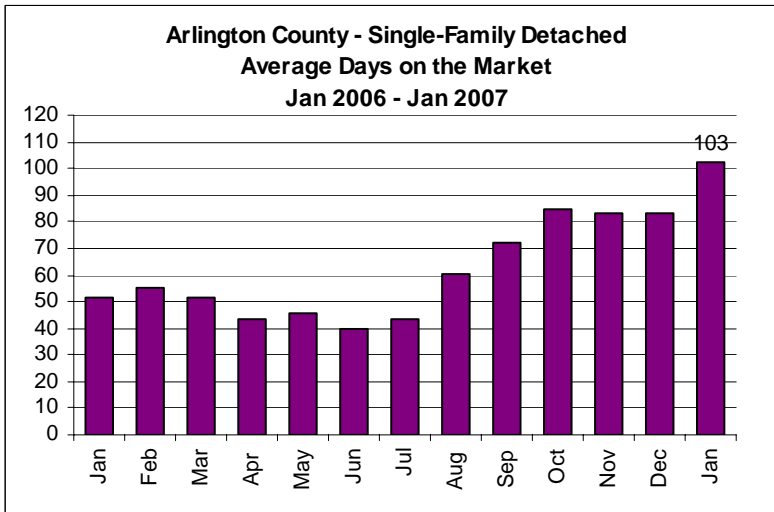
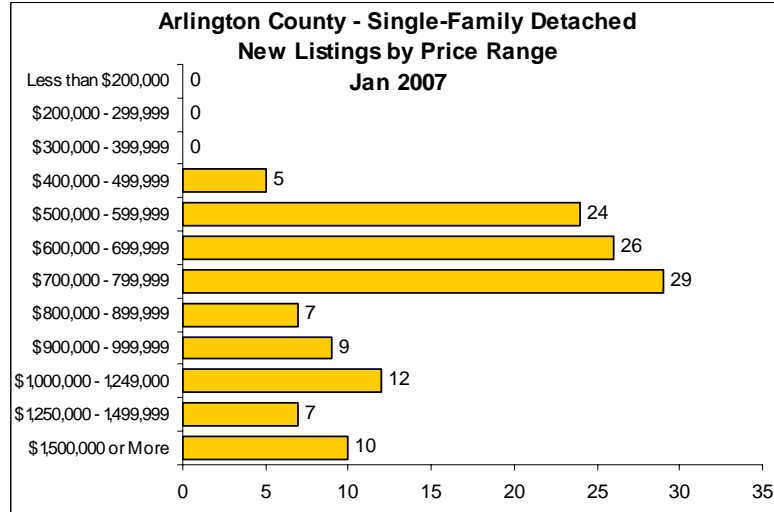
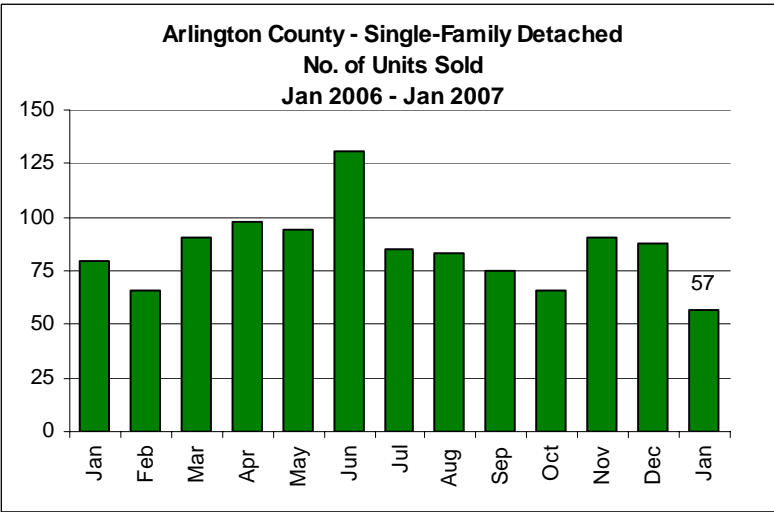
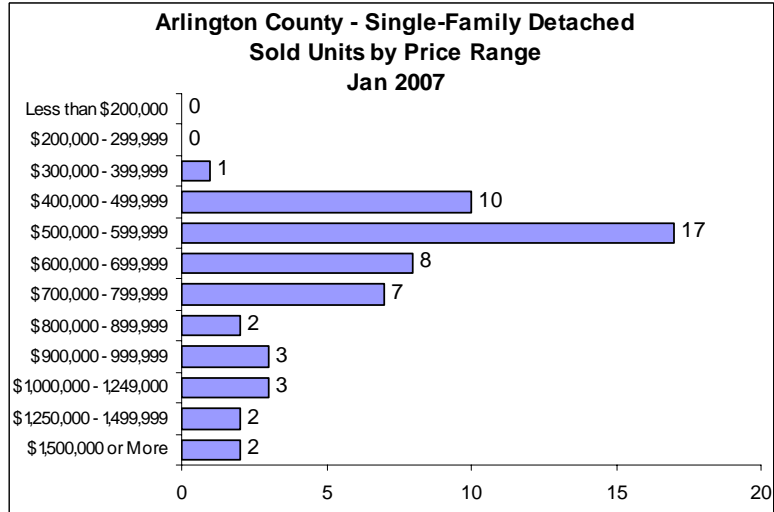
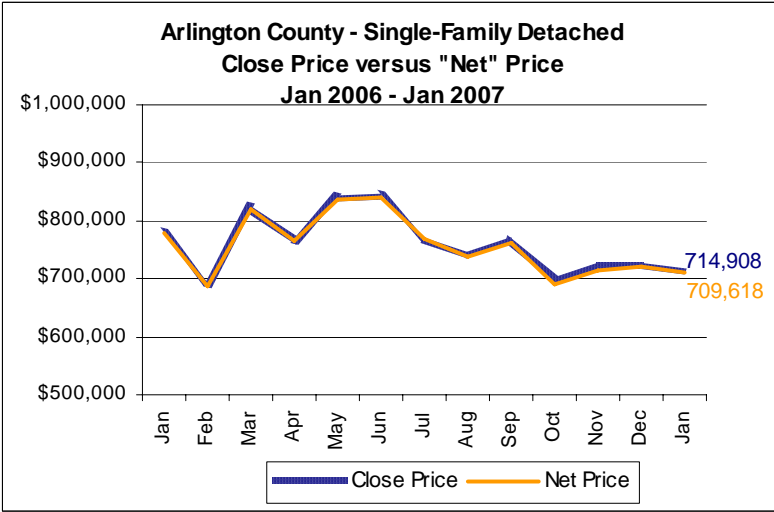


Data Source: Metropolitan Regional Information Systems, Inc. (MRIS)

NOTES: Properties not listed through this multiple listing service are not reflected. The term "net price" is equal to the close price (or settlement price) minus the amount of any seller subsidy. Sold units by price range are reported based on the close price (not the "net price.") Average days on the market are calculated from the multiple listing days on the market field (DOMP). Data presented in this report may differ slightly from other statistics based on MRIS data. Monthly data may be revised periodically as MRIS data are updated.

For more market statistics visit [www.nvar.com](http://www.nvar.com).

Single-Family Detached Homes

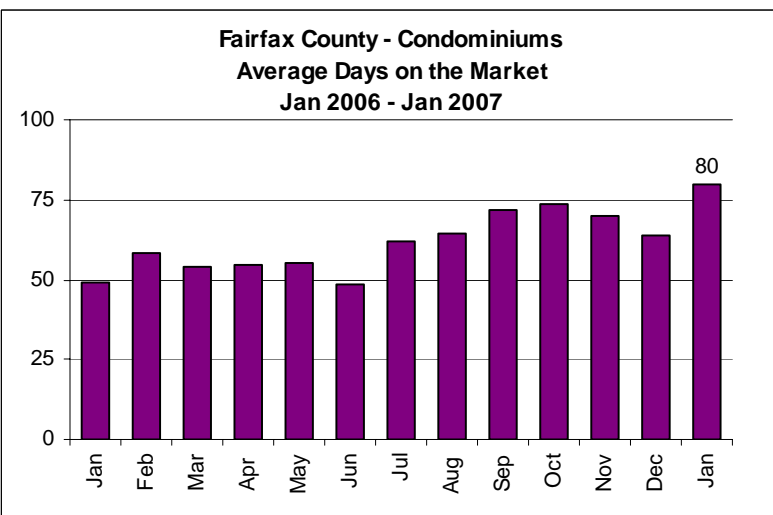
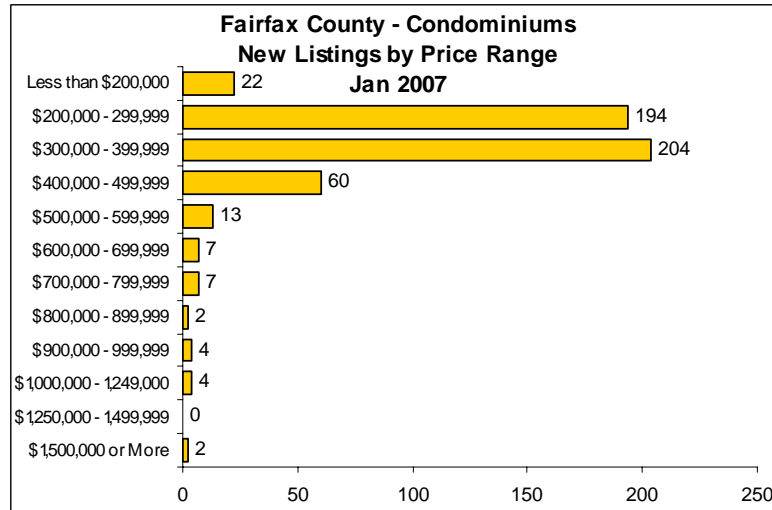
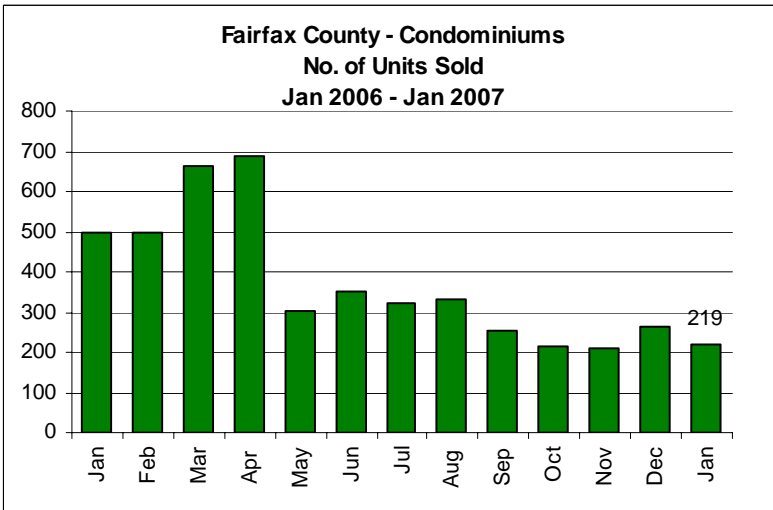
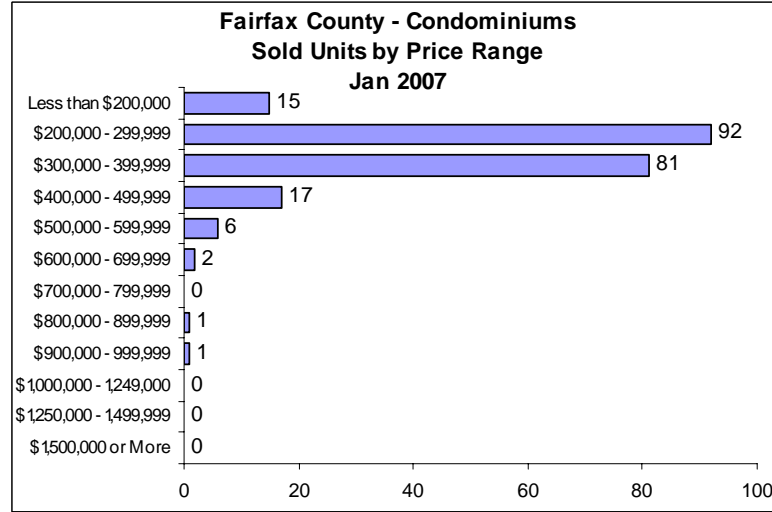
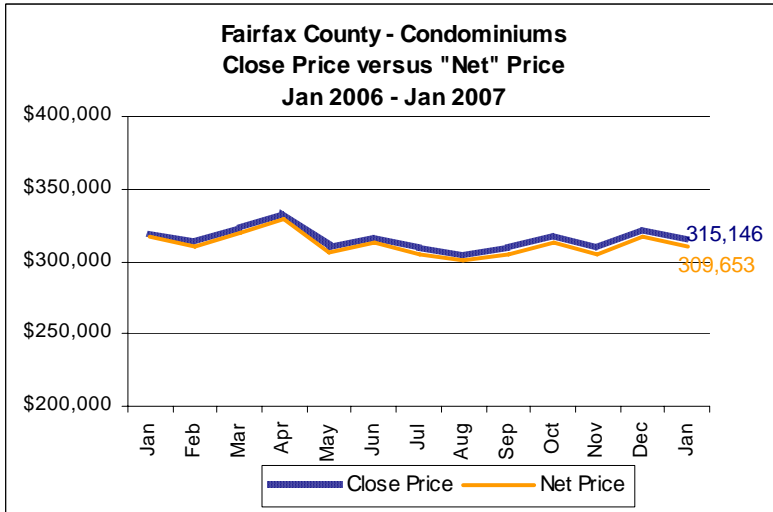


Data Source: Metropolitan Regional Information Systems, Inc. (MRIS)

NOTES: Properties not listed through this multiple listing service are not reflected. The term "net price" is equal to the close price (or settlement price) minus the amount of any seller subsidy. Sold units by price range are reported based on the close price (not the "net price.") Average days on the market are calculated from the multiple listing days on the market field (DOMP). Data presented in this report may differ slightly from other statistics based on MRIS data. Monthly data may be revised periodically as MRIS data are updated.

For more market statistics visit [www.nvar.com](http://www.nvar.com).

Condominiums

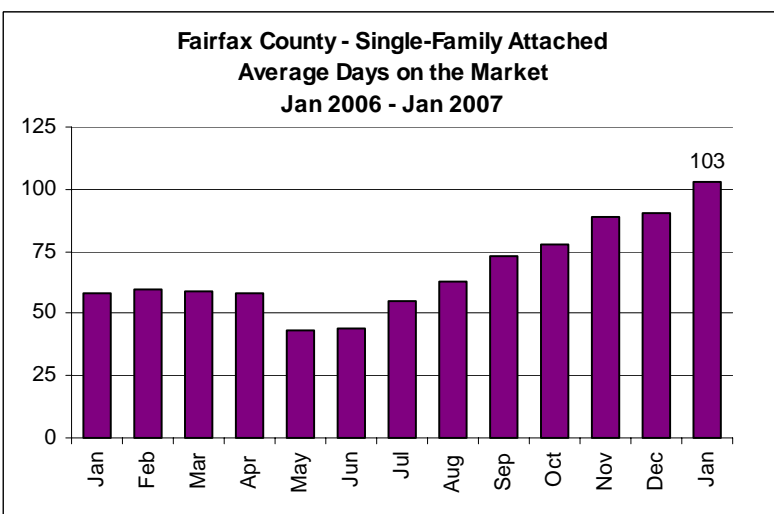
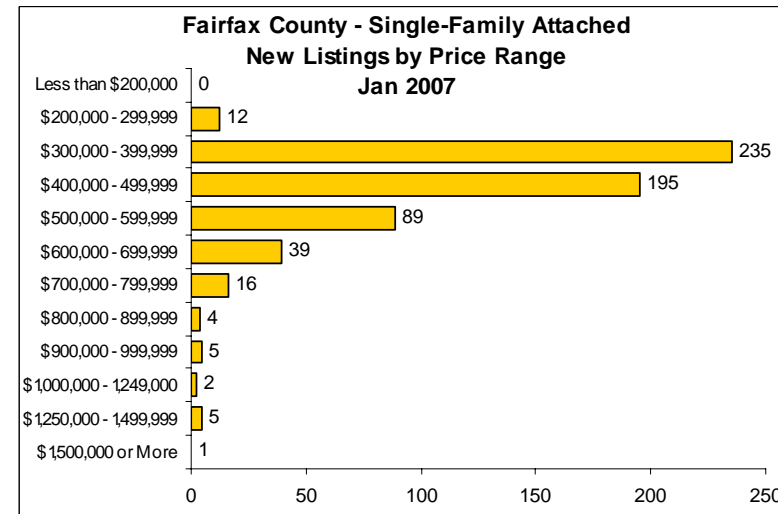
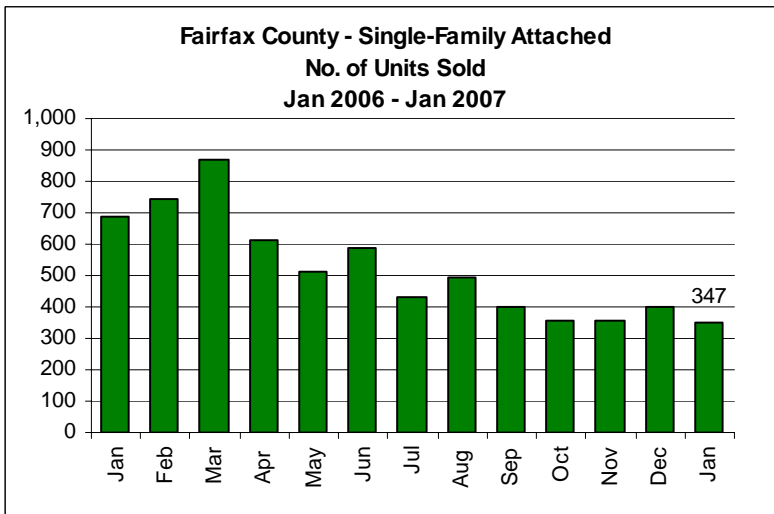
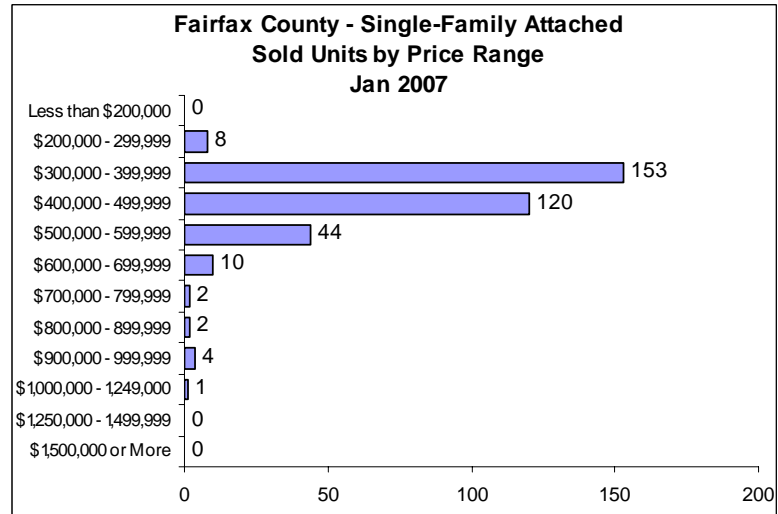
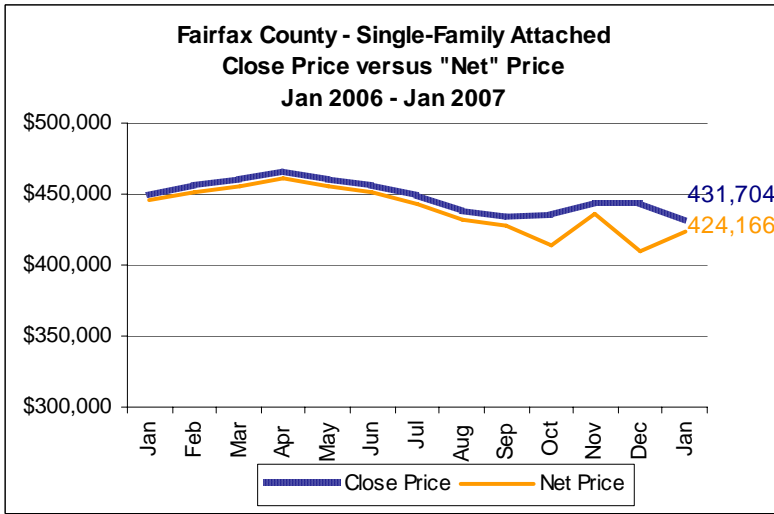


Data Source: Metropolitan Regional Information Systems, Inc. (MRIS)

NOTES: Properties not listed through this multiple listing service are not reflected. The term "net price" is equal to the close price (or settlement price) minus the amount of any seller subsidy. Sold units by price range are reported based on the close price (not the "net price.") Average days on the market are calculated from the multiple listing days on the market field (DOMP). Data presented in this report may differ slightly from other statistics based on MRIS data. Monthly data may be revised periodically as MRIS data are updated.

For more market statistics visit [www.nvar.com](http://www.nvar.com).

Single-Family Attached Homes

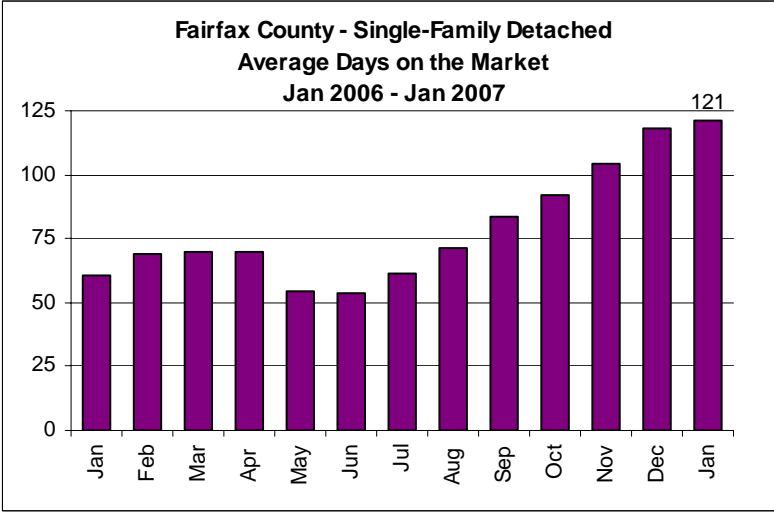
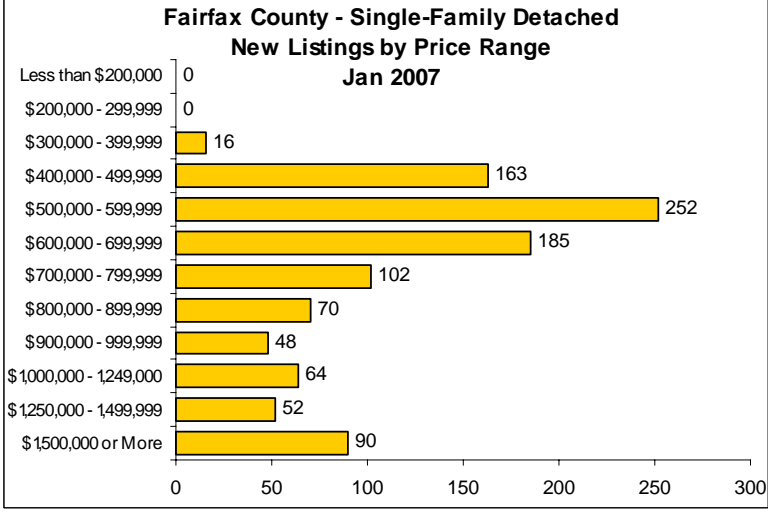
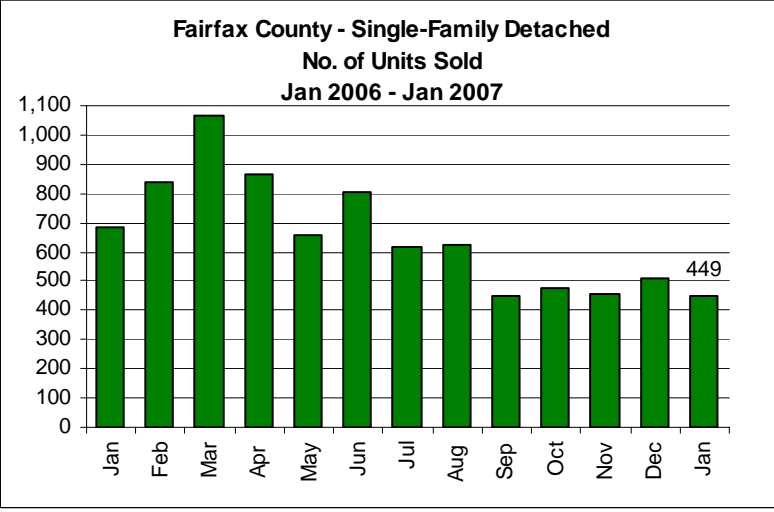
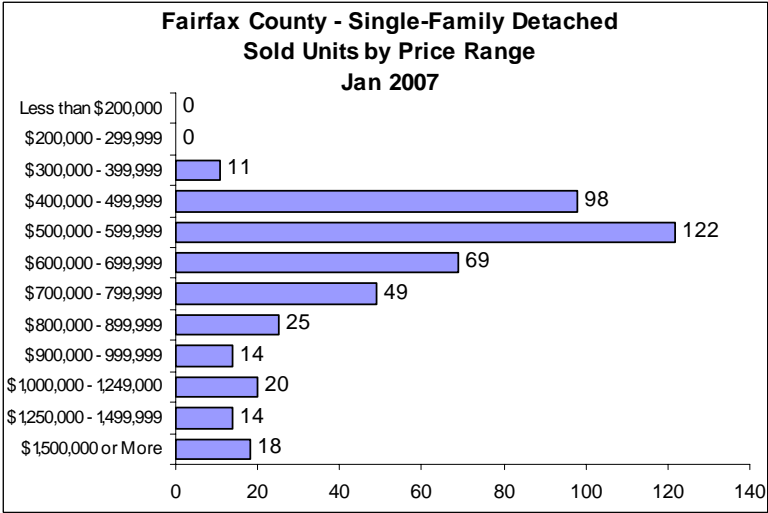
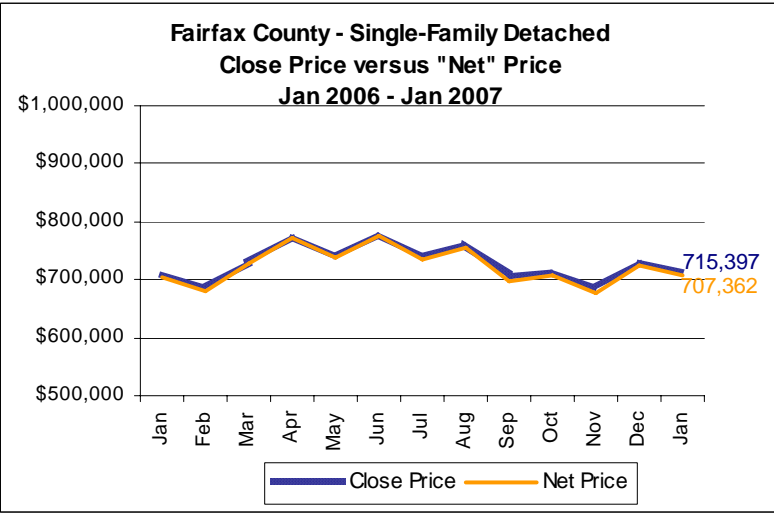


Data Source: Metropolitan Regional Information Systems, Inc. (MRIS)

NOTES: Properties not listed through this multiple listing service are not reflected. The term "net price" is equal to the close price (or settlement price) minus the amount of any seller subsidy. Sold units by price range are reported based on the close price (not the "net price.") Average days on the market are calculated from the multiple listing days on the market field (DOMP). Data presented in this report may differ slightly from other statistics based on MRIS data. Monthly data may be revised periodically as MRIS data are updated.

For more market statistics visit [www.nvar.com](http://www.nvar.com).

Single-Family Detached Homes



Data Source: Metropolitan Regional Information Systems, Inc. (MRIS)

NOTES: Properties not listed through this multiple listing service are not reflected. The term "net price" is equal to the close price (or settlement price) minus the amount of any seller subsidy. Sold units by price range are reported based on the close price (not the "net price.") Average days on the market are calculated from the multiple listing days on the market field (DOMP). Data presented in this report may differ slightly from other statistics based on MRIS data. Monthly data may be revised periodically as MRIS data are updated.

For more market statistics visit [www.nvar.com](http://www.nvar.com).