

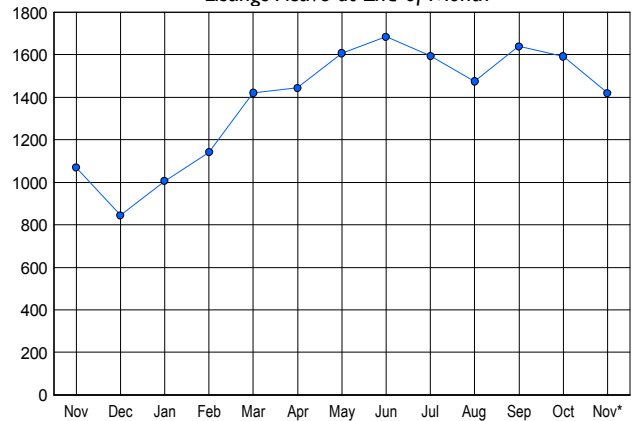


LISTINGS

Price Range	New This Month			Total Actives		
	2006	2005	% Change	2006	2005	% Change
0 - 149,999	14	13	7.7	33	32	3.1
150,000 - 199,999	36	20	80.0	205	40	412.5
200,000 - 299,999	72	109	-33.9	297	168	76.8
300,000 - 399,999	92	135	-31.9	314	260	20.8
400,000 - 499,999	64	103	-37.9	221	200	10.5
500,000 - 599,999	43	74	-41.9	141	157	-10.2
600,000 - 699,999	16	34	-52.9	65	77	-15.6
700,000 - 799,999	13	14	-7.1	49	35	40.0
800,000 - 899,999	5	12	-58.3	26	29	-10.3
900,000 - 999,999	5	6	-16.7	13	17	-23.5
1,000,000 - 1,249,999	2	4	-50.0	9	14	-35.7
1,250,000 - 1,499,999	6	5	20.0	14	14	0.0
1,500,000 +	5	2	150.0	32	26	23.1
TOTALS	373	531	-29.8	1419	1069	32.7

INVENTORY TREND

Listings Active at End of Month

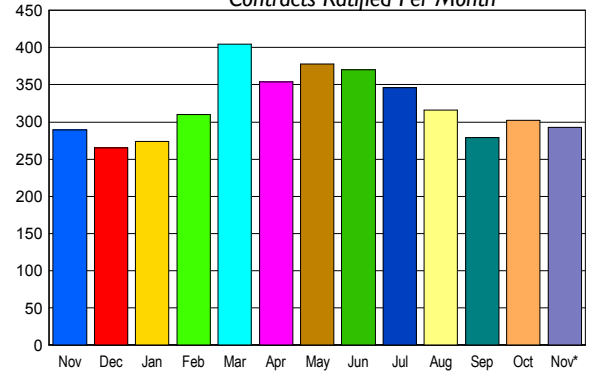


CONTRACTS

Price Range	New This Month			Year-To-Date		
	2006	2005	% Change	2006	2005	% Change
0 - 149,999	6	14	-57.1	84	155	-45.8
150,000 - 199,999	40	22	81.8	402	278	44.6
200,000 - 299,999	64	70	-8.6	794	889	-10.7
300,000 - 399,999	76	78	-2.6	914	1,014	-9.9
400,000 - 499,999	41	47	-12.8	550	716	-23.2
500,000 - 599,999	33	20	65.0	340	423	-19.6
600,000 - 699,999	15	17	-11.8	159	215	-26.0
700,000 - 799,999	7	11	-36.4	95	92	3.3
800,000 - 899,999	4	5	-20.0	51	44	15.9
900,000 - 999,999	2	3	-33.3	31	26	19.2
1,000,000 - 1,249,999	2	0	200.0	27	36	-25.0
1,250,000 - 1,499,999	1	1	0.0	21	19	10.5
1,500,000 +	2	1	100.0	29	45	-35.6
TOTALS	293	289	1.4	3497	3952	-11.5

SALES TREND

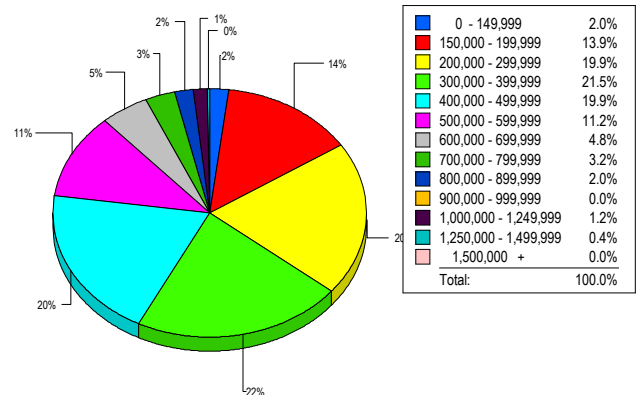
Contracts Ratified Per Month



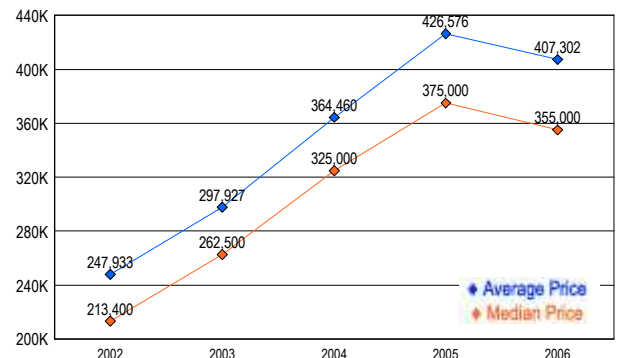
SETTLEMENTS

Price Range	New This Month			Year-To-Date		
	2006	2005	% Change	2006	2005	% Change
0 - 149,999	5	7	-28.6	84	158	-46.8
150,000 - 199,999	35	10	250.0	333	191	74.3
200,000 - 299,999	50	43	16.3	744	757	-1.7
300,000 - 399,999	54	78	-30.8	859	1,000	-14.1
400,000 - 499,999	50	46	8.7	545	751	-27.4
500,000 - 599,999	28	25	12.0	366	415	-11.8
600,000 - 699,999	12	16	-25.0	155	238	-34.9
700,000 - 799,999	8	6	33.3	90	99	-9.1
800,000 - 899,999	5	5	0.0	46	41	12.2
900,000 - 999,999	0	9	-100.0	24	29	-17.2
1,000,000 - 1,249,999	3	7	-57.1	33	35	-5.7
1,250,000 - 1,499,999	1	0	100.0	15	19	-21.1
1,500,000 +	0	4	-100.0	31	39	-20.5
TOTALS	251	256	-2.0	3325	3772	-11.9

MARKET BY PRICE RANGE



AVERAGE & MEDIAN PRICE



DATA SOURCE: Metropolitan Regional Information Systems, Inc. (MRIS)

NOTES: Properties not listed through this Multiple Listing Service are not reflected. The term "sales" represents ratified purchase contracts. Current year information is preliminary and subject to revision. Current year- to- date contract information may not equal the sum of the monthly contract totals reported in

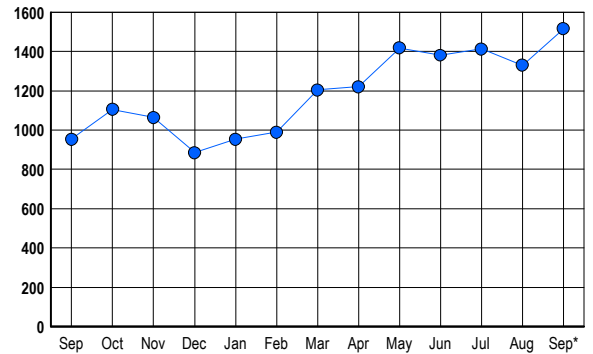


LISTINGS

Prices Range	New This Month			Total Actives		
	2006	2005	% Change	2006	2005	% Change
0 - 149,999	2	2	0.0	3	2	50.0
150,000 - 199,999	7	15	-53.3	18	10	80.0
200,000 - 299,999	59	75	-21.3	146	75	94.7
300,000 - 399,999	103	130	-20.8	272	144	88.9
400,000 - 499,999	111	119	-6.7	308	161	91.3
500,000 - 599,999	90	112	-19.6	199	130	53.1
600,000 - 699,999	82	88	-6.8	148	91	62.6
700,000 - 799,999	70	74	-5.4	98	67	46.3
800,000 - 899,999	36	47	-23.4	66	51	29.4
900,000 - 999,999	30	32	-6.3	60	42	42.9
1,000,000 - 1,249,999	25	32	-21.9	37	29	27.6
1,250,000 - 1,499,999	27	32	-15.6	53	33	60.6
1,500,000 +	63	76	-17.1	108	119	-9.2
TOTALS	705	834	-15.5	1516	954	58.9

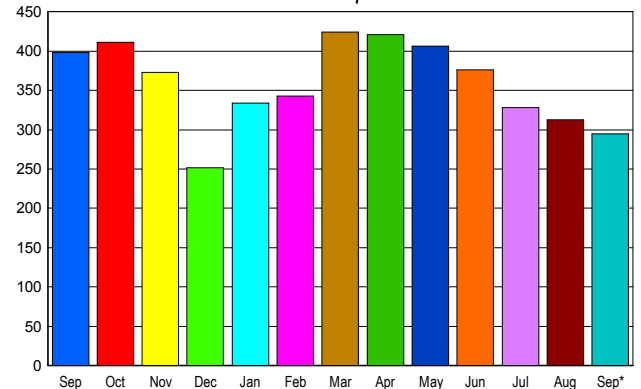
INVENTORY TREND

Listings Active at End of Month



SALES TREND

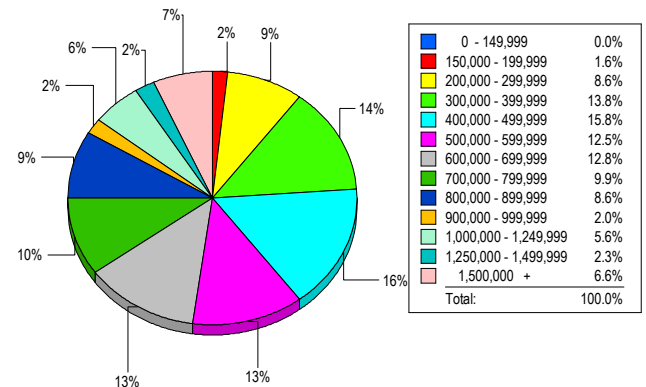
Contracts Ratified Per Month



CONTRACTS

Price Range	New This Month			Year-To-Date		
	2006	2005	% Change	2006	2005	% Change
0 - 149,999	2	4	-50.0	18	66	-72.7
150,000 - 199,999	11	17	-35.3	73	203	-64.0
200,000 - 299,999	41	53	-22.6	434	483	-10.1
300,000 - 399,999	59	73	-19.2	595	739	-19.5
400,000 - 499,999	45	62	-27.4	456	606	-24.8
500,000 - 599,999	24	42	-42.9	333	373	-10.7
600,000 - 699,999	40	49	-18.4	300	389	-22.9
700,000 - 799,999	17	24	-29.2	274	308	-11.0
800,000 - 899,999	14	19	-26.3	149	205	-27.3
900,000 - 999,999	14	16	-12.5	103	143	-28.0
1,000,000 - 1,249,999	11	12	-8.3	110	94	17.0
1,250,000 - 1,499,999	5	14	-64.3	109	118	-7.6
1,500,000 +	12	13	-7.7	174	178	-2.2
TOTALS	295	398	-25.9	3128	3905	-19.9

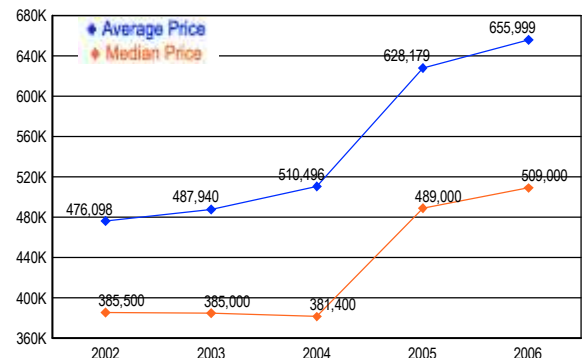
MARKET BY PRICE RANGE



SETTLEMENTS

Price Range	New This Month			Year-to-Date		
	2006	2005	% Change	2006	2005	% Change
0 - 149,999	0	2	-100.0	22	56	-60.7
150,000 - 199,999	5	13	-61.5	71	195	-63.6
200,000 - 299,999	26	43	-39.5	393	470	-16.4
300,000 - 399,999	42	61	-31.1	570	646	-11.8
400,000 - 499,999	48	56	-14.3	451	579	-22.1
500,000 - 599,999	38	39	-2.6	331	361	-8.3
600,000 - 699,999	39	22	77.3	288	318	-9.4
700,000 - 799,999	30	28	7.1	279	303	-7.9
800,000 - 899,999	26	21	23.8	173	236	-26.7
900,000 - 999,999	6	17	-64.7	106	148	-28.4
1,000,000 - 1,249,999	17	9	88.9	141	140	0.7
1,250,000 - 1,499,999	7	11	-36.4	92	118	-22.0
1,500,000 +	20	12	66.7	179	173	3.5
TOTALS	304	334	-9.0	3096	3743	-17.3

AVERAGE & MEDIAN PRICE



DATA SOURCE: Metropolitan Regional Information Systems, Inc. (MRIS)

NOTES: Properties not listed through this Multiple Listing Service are not reflected. The term "sales" represents ratified purchase contracts. Current year information is preliminary and subject to revision. Current year-to-date contract information may not equal the sum of the monthly contract totals reported in

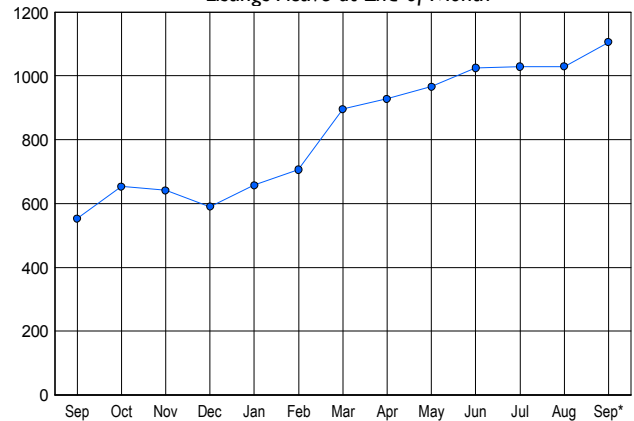


LISTINGS

Price Range	New This Month			Total Actives		
	2006	2005	% Change	2006	2005	% Change
0 - 149,999	4	9	-55.6	10	23	-56.5
150,000 - 199,999	36	39	-7.7	76	26	192.3
200,000 - 299,999	168	221	-24.0	415	233	78.1
300,000 - 399,999	142	155	-8.4	342	162	111.1
400,000 - 499,999	46	62	-25.8	135	76	77.6
500,000 - 599,999	25	16	56.3	56	19	194.7
600,000 - 699,999	9	10	-10.0	29	7	314.3
700,000 - 799,999	9	4	125.0	21	4	425.0
800,000 - 899,999	2	4	-50.0	7	1	600.0
900,000 - 999,999	0	2	-100.0	6	0	0.0
1,000,000 - 1,249,999	0	2	-100.0	1	2	-50.0
1,250,000 - 1,499,999	2	1	100.0	4	0	0.0
1,500,000 +	2	1	100.0	4	0	0.0
TOTALS	445	526	-15.4	1106	553	100.0

INVENTORY TREND

Listings Active at End of Month

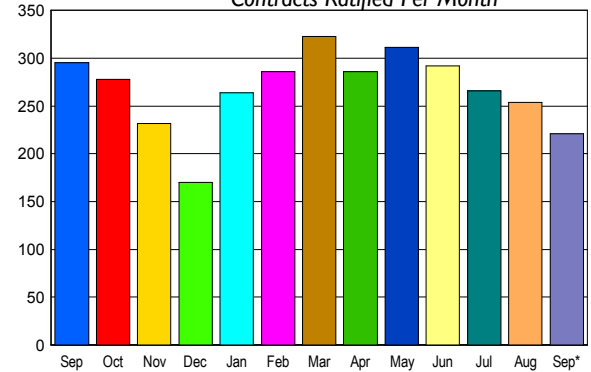


CONTRACTS

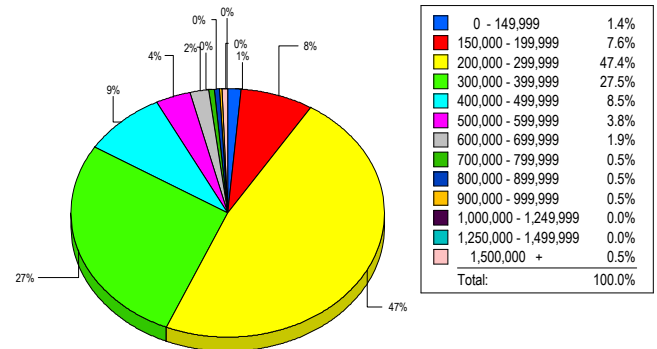
Price Range	New This Month			Year-To-Date		
	2006	2005	% Change	2006	2005	% Change
0 - 149,999	3	2	50.0	37	96	-61.5
150,000 - 199,999	28	36	-22.2	244	451	-45.9
200,000 - 299,999	91	128	-28.9	1,111	1,298	-14.4
300,000 - 399,999	69	80	-13.8	674	652	3.4
400,000 - 499,999	15	26	-42.3	210	276	-23.9
500,000 - 599,999	8	11	-27.3	76	78	-2.6
600,000 - 699,999	3	6	-50.0	28	43	-34.9
700,000 - 799,999	0	1	-100.0	17	14	21.4
800,000 - 899,999	1	3	-66.7	12	14	-14.3
900,000 - 999,999	1	1	0.0	7	3	133.3
1,000,000 - 1,249,999	0	0	0.0	2	2	0.0
1,250,000 - 1,499,999	1	0	100.0	2	4	-50.0
1,500,000 +	1	1	0.0	9	11	-18.2
TOTALS	221	295	-25.1	2429	2942	-17.4

SALES TREND

Contracts Ratified Per Month



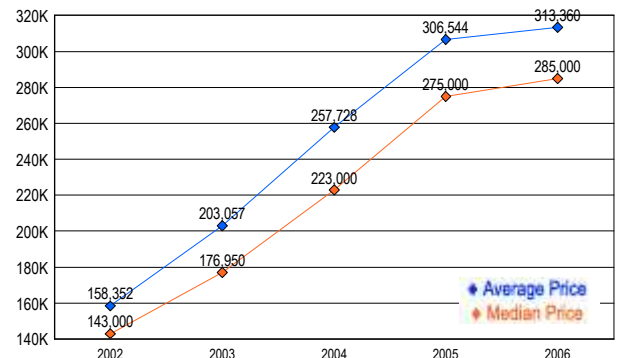
MARKET BY PRICE RANGE



SETTLEMENTS

Price Range	New This Month			Year-To-Date		
	2006	2005	% Change	2006	2005	% Change
0 - 149,999	3	2	50.0	36	95	-62.1
150,000 - 199,999	16	21	-23.8	207	428	-51.6
200,000 - 299,999	100	121	-17.4	1,091	1,205	-9.5
300,000 - 399,999	58	82	-29.3	658	668	-1.5
400,000 - 499,999	18	27	-33.3	218	283	-23.0
500,000 - 599,999	8	3	166.7	69	79	-12.7
600,000 - 699,999	4	4	0.0	28	47	-40.4
700,000 - 799,999	1	3	-66.7	18	18	0.0
800,000 - 899,999	1	4	-75.0	12	11	9.1
900,000 - 999,999	1	1	0.0	8	2	300.0
1,000,000 - 1,249,999	0	0	0.0	2	2	0.0
1,250,000 - 1,499,999	0	0	0.0	0	4	-100.0
1,500,000 +	1	1	0.0	8	11	-27.3
TOTALS	211	269	-21.6	2355	2853	-17.5

AVERAGE & MEDIAN PRICE



DATA SOURCE: Metropolitan Regional Information Systems, Inc. (MRIS)

NOTES: Properties not listed through this Multiple Listing Service are not reflected. The term "sales" represents ratified purchase contracts. Current year information is preliminary and subject to revision. Current year-to-date contract information may not equal the sum of the monthly contract totals reported in

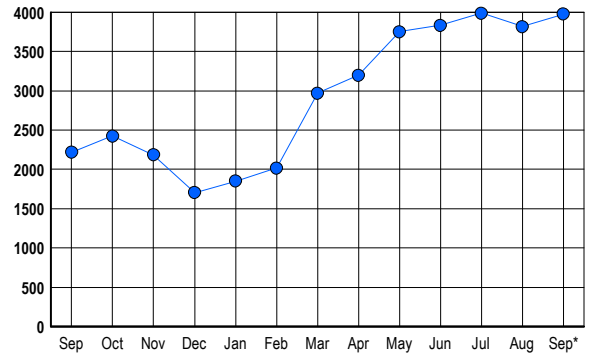


LISTINGS

Prices Range	New This Month			Total Actives		
	2006	2005	% Change	2006	2005	% Change
0 - 149,999	1	3	-66.7	0	17	-100.0
150,000 - 199,999	1	2	-50.0	2	3	-33.3
200,000 - 299,999	62	111	-44.1	160	99	61.6
300,000 - 399,999	312	397	-21.4	646	364	77.5
400,000 - 499,999	398	422	-5.7	867	377	130.0
500,000 - 599,999	262	295	-11.2	662	325	103.7
600,000 - 699,999	197	210	-6.2	474	260	82.3
700,000 - 799,999	117	163	-28.2	274	187	46.5
800,000 - 899,999	102	104	-1.9	213	105	102.9
900,000 - 999,999	43	55	-21.8	126	66	90.9
1,000,000 - 1,249,999	66	63	4.8	151	84	79.8
1,250,000 - 1,499,999	62	80	-22.5	145	117	23.9
1,500,000 +	98	91	7.7	255	213	19.7
TOTALS	1721	1996	-13.8	3975	2217	79.3

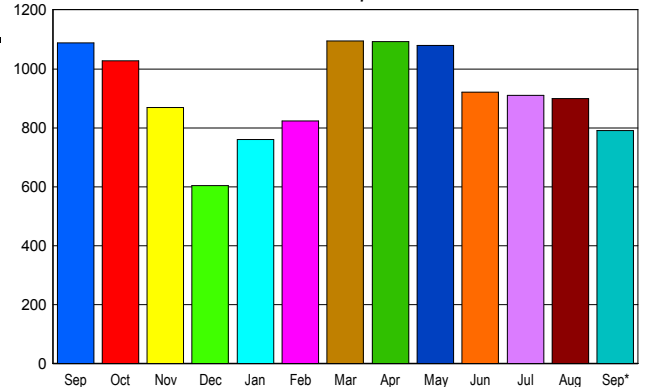
INVENTORY TREND

Listings Active at End of Month



SALES TREND

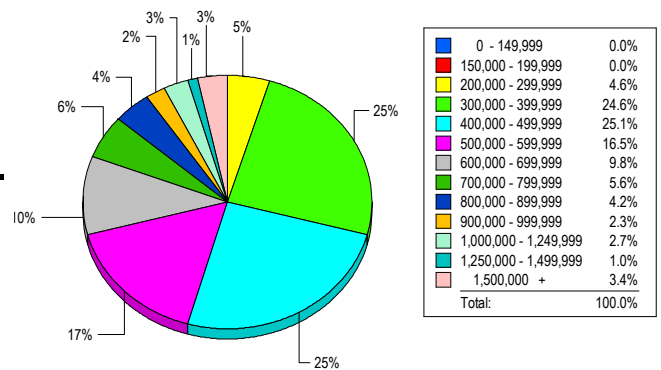
Contracts Ratified Per Month



CONTRACTS

Price Range	New This Month			Year-To-Date		
	2006	2005	% Change	2006	2005	% Change
0 - 149,999	0	1	-100.0	0	6	-100.0
150,000 - 199,999	0	1	-100.0	3	22	-86.4
200,000 - 299,999	41	82	-50.0	409	1,021	-59.9
300,000 - 399,999	201	285	-29.5	1,937	2,696	-28.2
400,000 - 499,999	210	259	-18.9	1,931	2,408	-19.8
500,000 - 599,999	109	145	-24.8	1,218	1,303	-6.5
600,000 - 699,999	79	98	-19.4	872	1,063	-18.0
700,000 - 799,999	37	67	-44.8	551	702	-21.5
800,000 - 899,999	28	53	-47.2	344	445	-22.7
900,000 - 999,999	18	23	-21.7	220	246	-10.6
1,000,000 - 1,249,999	22	24	-8.3	216	263	-17.9
1,250,000 - 1,499,999	18	27	-33.3	228	215	6.0
1,500,000 +	28	23	21.7	259	237	9.3
TOTALS	791	1088	-27.3	8188	10627	-23.0

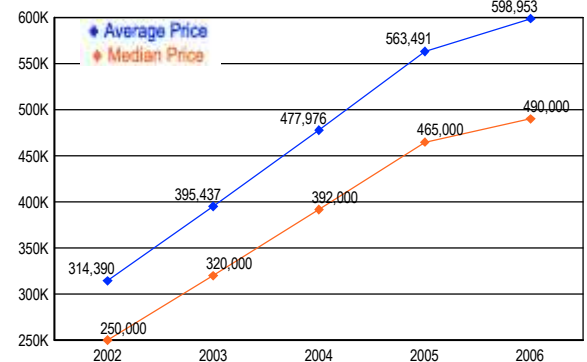
MARKET BY PRICE RANGE



SETTLEMENTS

Price Range	New This Month			Year-to-Date		
	2006	2005	% Change	2006	2005	% Change
0 - 149,999	0	0	0.0	0	5	-100.0
150,000 - 199,999	0	1	-100.0	2	21	-90.5
200,000 - 299,999	34	71	-52.1	358	924	-61.3
300,000 - 399,999	180	247	-27.1	1,884	2,491	-24.4
400,000 - 499,999	184	256	-28.1	1,921	2,331	-17.6
500,000 - 599,999	121	125	-3.2	1,189	1,304	-8.8
600,000 - 699,999	72	99	-27.3	841	1,030	-18.3
700,000 - 799,999	41	69	-40.6	554	669	-17.2
800,000 - 899,999	31	44	-29.5	342	425	-19.5
900,000 - 999,999	17	21	-19.0	203	263	-22.8
1,000,000 - 1,249,999	20	35	-42.9	246	311	-20.9
1,250,000 - 1,499,999	7	23	-69.6	189	195	-3.1
1,500,000 +	25	18	38.9	254	226	12.4
TOTALS	732	1009	-27.5	7983	10195	-21.7

AVERAGE & MEDIAN PRICE



DATA SOURCE: Metropolitan Regional Information Systems, Inc. (MRIS)

NOTES: Properties not listed through this Multiple Listing Service are not reflected. The term "sales" represents ratified purchase contracts. Current year information is preliminary and subject to revision. Current year- to- date contract information may not equal the sum of the monthly contract totals reported in

FAIRFAX COUNTY

Residential Market Report



HOUSING REPORT

CONDO & COOPS

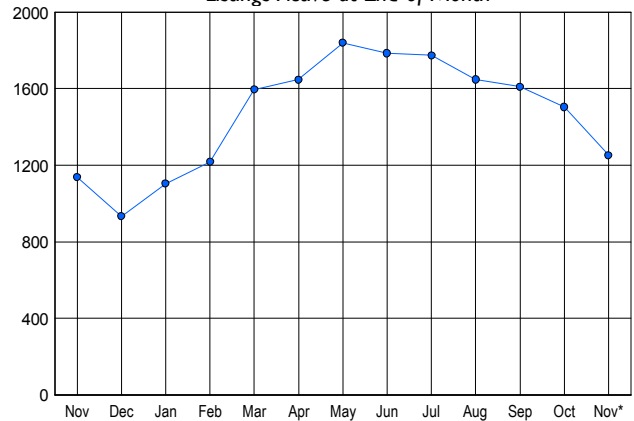
November 2006

LISTINGS

Price Range	New This Month			Total Actives		
	2006	2005	% Change	2006	2005	% Change
0 - 149,999	2	5	-60.0	3	22	-86.4
150,000 - 199,999	12	12	0.0	65	26	150.0
200,000 - 299,999	155	211	-26.5	527	383	37.6
300,000 - 399,999	116	251	-53.8	424	480	-11.7
400,000 - 499,999	38	51	-25.5	149	141	5.7
500,000 - 599,999	5	13	-61.5	37	46	-19.6
600,000 - 699,999	5	4	25.0	16	11	45.5
700,000 - 799,999	3	3	0.0	8	6	33.3
800,000 - 899,999	1	4	-75.0	9	9	0.0
900,000 - 999,999	1	3	-66.7	3	4	-25.0
1,000,000 - 1,249,999	1	1	0.0	6	2	200.0
1,250,000 - 1,499,999	2	1	100.0	4	5	-20.0
1,500,000 +	0	0	0.0	2	3	-33.3
TOTALS	341	559	-39.0	1253	1138	10.1

INVENTORY TREND

Listings Active at End of Month

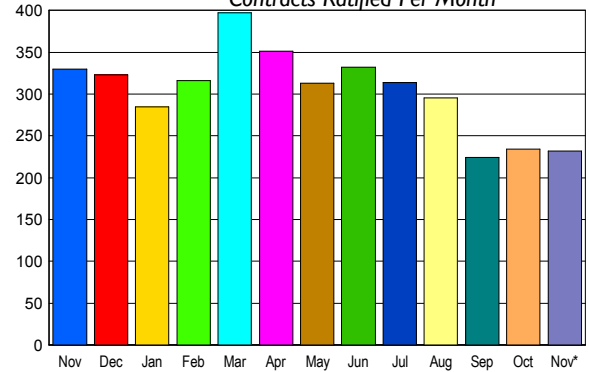


CONTRACTS

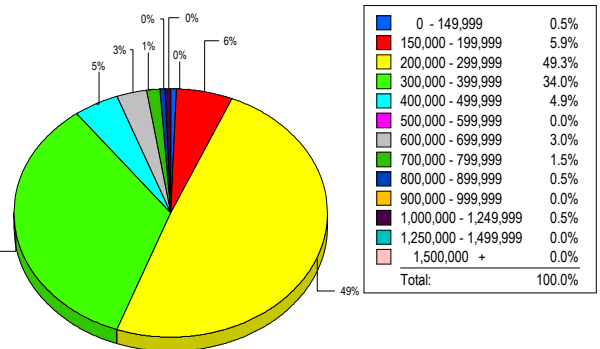
Price Range	New This Month			Year-To-Date		
	2006	2005	% Change	2006	2005	% Change
0 - 149,999	0	1	-100.0	14	27	-48.1
150,000 - 199,999	14	6	133.3	137	265	-48.3
200,000 - 299,999	110	140	-21.4	1,464	1,865	-21.5
300,000 - 399,999	89	146	-39.0	1,262	1,751	-27.9
400,000 - 499,999	11	26	-57.7	268	386	-30.6
500,000 - 599,999	2	9	-77.8	52	92	-43.5
600,000 - 699,999	3	1	200.0	26	13	100.0
700,000 - 799,999	3	0	300.0	10	3	233.3
800,000 - 899,999	0	0	0.0	11	7	57.1
900,000 - 999,999	0	1	-100.0	4	3	33.3
1,000,000 - 1,249,999	0	0	0.0	3	4	-25.0
1,250,000 - 1,499,999	0	0	0.0	1	0	100.0
1,500,000 +	0	0	0.0	2	1	100.0
TOTALS	232	330	-29.7	3254	4417	-26.3

SALES TREND

Contracts Ratified Per Month



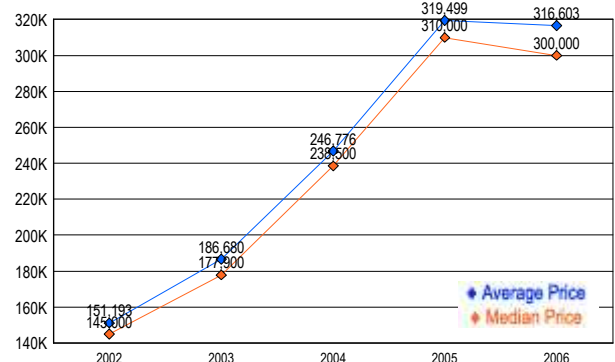
MARKET BY PRICE RANGE



SETTLEMENTS

Price Range	New This Month			Year-To-Date		
	2006	2005	% Change	2006	2005	% Change
0 - 149,999	1	4	-75.0	14	25	-44.0
150,000 - 199,999	12	6	100.0	127	237	-46.4
200,000 - 299,999	100	120	-16.7	1,445	1,755	-17.7
300,000 - 399,999	69	109	-36.7	1,274	1,786	-28.7
400,000 - 499,999	10	26	-61.5	297	434	-31.6
500,000 - 599,999	0	8	-100.0	47	88	-46.6
600,000 - 699,999	6	2	200.0	27	17	58.8
700,000 - 799,999	3	0	300.0	12	4	200.0
800,000 - 899,999	1	1	0.0	11	6	83.3
900,000 - 999,999	0	1	-100.0	2	3	-33.3
1,000,000 - 1,249,999	1	0	100.0	4	3	33.3
1,250,000 - 1,499,999	0	0	0.0	2	1	100.0
1,500,000 +	0	0	0.0	1	0	-100.0
TOTALS	203	277	-26.7	3263	4359	-25.1

AVERAGE & MEDIAN PRICE



DATA SOURCE: Metropolitan Regional Information Systems, Inc. (MRIS)

NOTES: Properties not listed through this Multiple Listing Service are not reflected. The term "sales" represents ratified purchase contracts. Current year information is preliminary and subject to revision. Current year-to-date contract information may not equal the sum of the monthly contract totals reported in

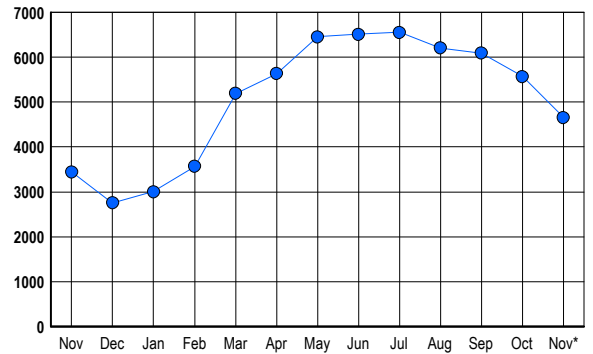


LISTINGS

Prices Range	New This Month			Total Actives		
	2006	2005	% Change	2006	2005	% Change
0 - 149,999	1	6	-83.3	2	25	-92.0
150,000 - 199,999	1	0	100.0	3	0	300.0
200,000 - 299,999	17	16	6.3	47	14	235.7
300,000 - 399,999	200	201	-0.5	589	298	97.7
400,000 - 499,999	289	403	-28.3	987	737	33.9
500,000 - 599,999	252	326	-22.7	949	650	46.0
600,000 - 699,999	122	226	-46.0	571	517	10.4
700,000 - 799,999	85	136	-37.5	352	330	6.7
800,000 - 899,999	44	94	-53.2	233	196	18.9
900,000 - 999,999	39	51	-23.5	169	141	19.9
1,000,000 - 1,249,999	30	60	-50.0	197	149	32.2
1,250,000 - 1,499,999	31	44	-29.5	196	140	40.0
1,500,000 +	54	42	28.6	360	247	45.7
TOTALS	1165	1605	-27.4	4655	3444	35.2

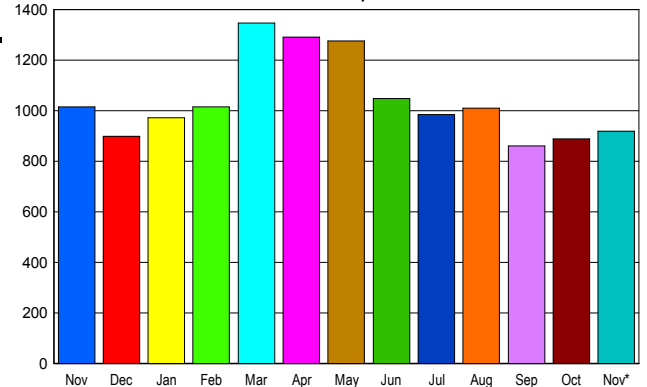
INVENTORY TREND

Listings Active at End of Month



SALES TREND

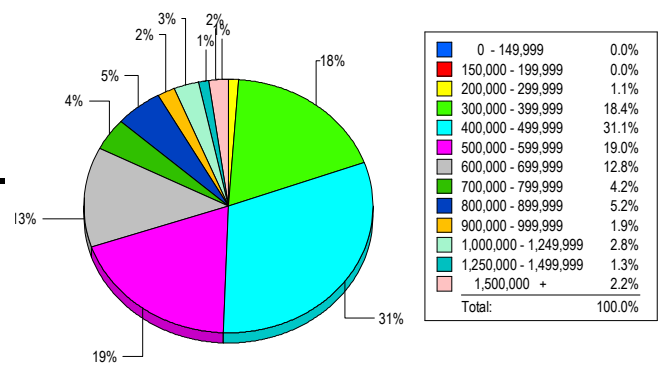
Contracts Ratified Per Month



CONTRACTS

Price Range	New This Month			Year-To-Date		
	2006	2005	% Change	2006	2005	% Change
0 - 149,999	0	0	0.0	0	4	-100.0
150,000 - 199,999	1	0	100.0	3	10	-70.0
200,000 - 299,999	20	11	81.8	113	273	-58.6
300,000 - 399,999	180	183	-1.6	1,831	2,802	-34.7
400,000 - 499,999	282	301	-6.3	3,028	4,221	-28.3
500,000 - 599,999	163	190	-14.2	2,381	3,311	-28.1
600,000 - 699,999	96	120	-20.0	1,562	2,168	-28.0
700,000 - 799,999	61	63	-3.2	815	1,192	-31.6
800,000 - 899,999	39	48	-18.8	531	750	-29.2
900,000 - 999,999	26	22	18.2	301	446	-32.5
1,000,000 - 1,249,999	17	37	-54.1	308	384	-19.8
1,250,000 - 1,499,999	16	19	-15.8	237	311	-23.8
1,500,000 +	19	22	-13.6	265	294	-9.9
TOTALS	920	1016	-9.4	11375	16166	-29.6

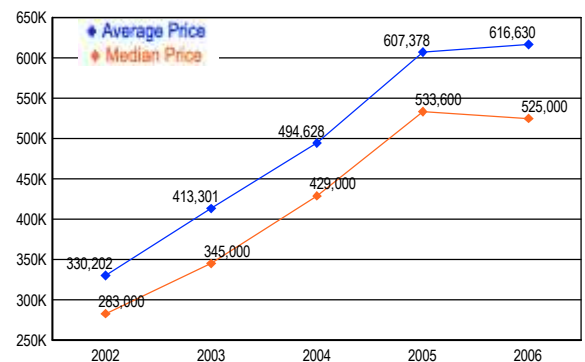
MARKET BY PRICE RANGE



SETTLEMENTS

Price Range	New This Month			Year-to-Date		
	2006	2005	% Change	2006	2005	% Change
0 - 149,999	0	0	0.0	0	6	-100.0
150,000 - 199,999	0	0	0.0	3	7	-57.1
200,000 - 299,999	9	6	50.0	103	232	-55.6
300,000 - 399,999	145	168	-13.7	1,713	2,437	-29.7
400,000 - 499,999	245	279	-12.2	2,973	4,157	-28.5
500,000 - 599,999	150	261	-42.5	2,385	3,445	-30.8
600,000 - 699,999	101	142	-28.9	1,545	2,308	-33.1
700,000 - 799,999	33	80	-58.8	801	1,274	-37.1
800,000 - 899,999	41	44	-6.8	521	753	-30.8
900,000 - 999,999	15	24	-37.5	283	446	-36.5
1,000,000 - 1,249,999	22	42	-47.6	344	426	-19.2
1,250,000 - 1,499,999	10	22	-54.5	190	285	-33.3
1,500,000 +	17	16	6.3	239	290	-17.6
TOTALS	788	1084	-27.3	11100	16066	-30.9

AVERAGE & MEDIAN PRICE



DATA SOURCE: Metropolitan Regional Information Systems, Inc. (MRIS)

NOTES: Properties not listed through this Multiple Listing Service are not reflected. The term "sales" represents ratified purchase contracts. Current year information is preliminary and subject to revision. Current year-to-date contract information may not equal the sum of the monthly contract totals reported in

ARLINGTON COUNTY

Residential Market Report



HOUSING REPORT

CONDO & COOPS

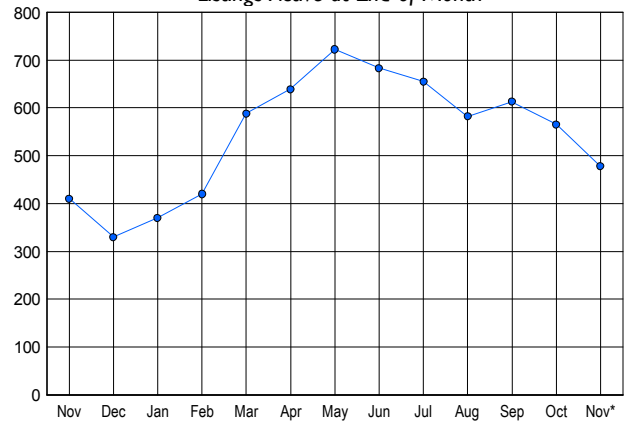
November 2006

LISTINGS

Price Range	New This Month			Total Actives		
	2006	2005	% Change	2006	2005	% Change
0 - 149,999	0	1	-100.0	1	7	-85.7
150,000 - 199,999	6	10	-40.0	26	17	52.9
200,000 - 299,999	25	50	-50.0	100	84	19.0
300,000 - 399,999	45	45	0.0	137	128	7.0
400,000 - 499,999	29	41	-29.3	86	84	2.4
500,000 - 599,999	19	20	-5.0	46	45	2.2
600,000 - 699,999	8	11	-27.3	25	26	-3.8
700,000 - 799,999	3	1	200.0	11	5	120.0
800,000 - 899,999	6	0	600.0	12	7	71.4
900,000 - 999,999	1	0	100.0	8	2	300.0
1,000,000 - 1,249,999	4	0	400.0	10	1	900.0
1,250,000 - 1,499,999	1	0	100.0	8	3	166.7
1,500,000 +	1	0	100.0	8	1	700.0
TOTALS	148	179	-17.3	478	410	16.6

INVENTORY TREND

Listings Active at End of Month

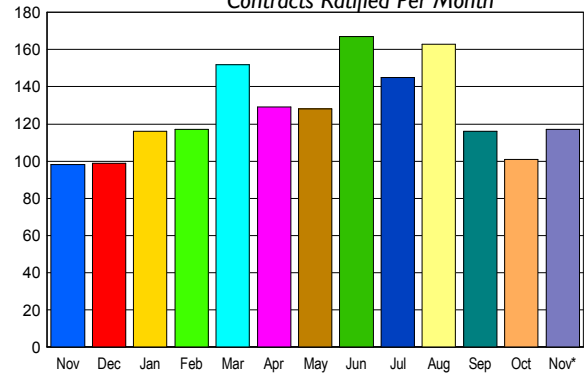


CONTRACTS

Price Range	New This Month			Year-To-Date		
	2006	2005	% Change	2006	2005	% Change
0 - 149,999	0	1	-100.0	10	50	-80.0
150,000 - 199,999	3	7	-57.1	67	93	-28.0
200,000 - 299,999	23	27	-14.8	309	355	-13.0
300,000 - 399,999	44	26	69.2	522	463	12.7
400,000 - 499,999	23	14	64.3	317	390	-18.7
500,000 - 599,999	12	11	9.1	137	148	-7.4
600,000 - 699,999	6	5	20.0	67	60	11.7
700,000 - 799,999	1	5	-80.0	10	24	-58.3
800,000 - 899,999	2	1	100.0	6	6	0.0
900,000 - 999,999	2	0	200.0	8	3	166.7
1,000,000 - 1,249,999	1	0	100.0	6	2	200.0
1,250,000 - 1,499,999	0	1	-100.0	4	2	100.0
1,500,000 +	0	0	0.0	0	2	-100.0
TOTALS	117	98	19.4	1463	1598	-8.4

SALES TREND

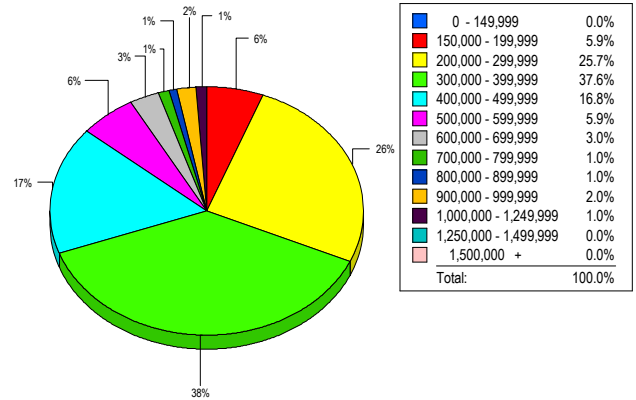
Contracts Ratified Per Month



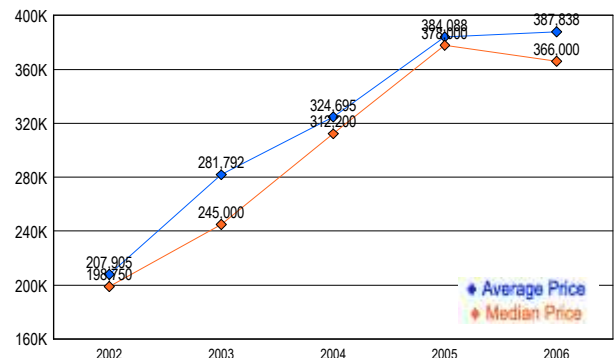
SETTLEMENTS

Price Range	New This Month			Year-To-Date		
	2006	2005	% Change	2006	2005	% Change
0 - 149,999	0	1	-100.0	13	53	-75.5
150,000 - 199,999	6	2	200.0	69	81	-14.8
200,000 - 299,999	26	19	36.8	308	320	-3.8
300,000 - 399,999	38	27	40.7	513	457	12.3
400,000 - 499,999	17	25	-32.0	295	419	-29.6
500,000 - 599,999	6	9	-33.3	133	159	-16.4
600,000 - 699,999	3	2	50.0	60	64	-6.3
700,000 - 799,999	1	2	-50.0	14	26	-46.2
800,000 - 899,999	1	1	0.0	7	6	16.7
900,000 - 999,999	2	0	200.0	7	5	40.0
1,000,000 - 1,249,999	1	0	100.0	5	2	150.0
1,250,000 - 1,499,999	0	0	0.0	2	1	100.0
1,500,000 +	0	0	0.0	4	0	-400.0
TOTALS	101	88	14.8	1430	1593	-10.2

MARKET BY PRICE RANGE



AVERAGE & MEDIAN PRICE



DATA SOURCE: Metropolitan Regional Information Systems, Inc. (MRIS)

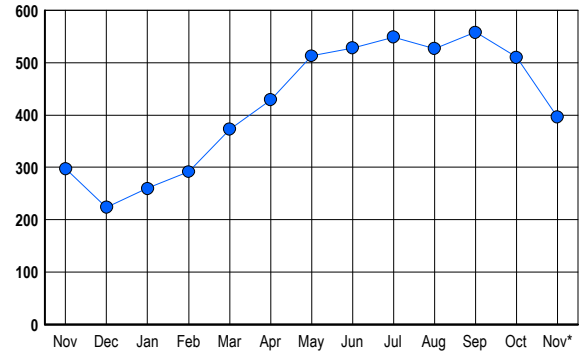
NOTES: Properties not listed through this Multiple Listing Service are not reflected. The term "sales" represents ratified purchase contracts. Current year information is preliminary and subject to revision. Current year-to-date contract information may not equal the sum of the monthly contract totals reported in

LISTINGS

Prices Range	New This Month			Total Actives		
	2006	2005	% Change	2006	2005	% Change
0 - 149,999	0	0	0.0	0	2	-100.0
150,000 - 199,999	0	0	0.0	0	0	0.0
200,000 - 299,999	1	1	0.0	2	1	100.0
300,000 - 399,999	6	9	-33.3	15	10	50.0
400,000 - 499,999	10	12	-16.7	26	22	18.2
500,000 - 599,999	25	25	0.0	68	47	44.7
600,000 - 699,999	21	42	-50.0	62	66	-6.1
700,000 - 799,999	20	27	-25.9	59	34	73.5
800,000 - 899,999	7	10	-30.0	31	15	106.7
900,000 - 999,999	8	14	-42.9	16	15	6.7
1,000,000 - 1,249,999	15	11	36.4	38	23	65.2
1,250,000 - 1,499,999	5	5	0.0	29	32	-9.4
1,500,000 +	7	6	16.7	50	31	61.3
TOTALS	125	162	-22.8	396	298	32.9

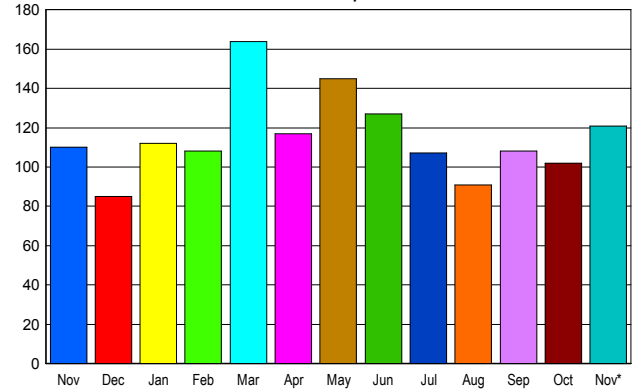
INVENTORY TREND

Listings Active at End of Month



SALES TREND

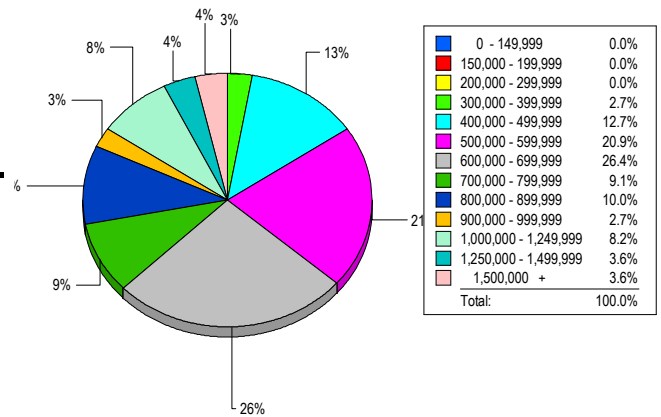
Contracts Ratified Per Month



CONTRACTS

Price Range	New This Month			Year-To-Date		
	2006	2005	% Change	2006	2005	% Change
0 - 149,999	0	0	0.0	0	0	0.0
150,000 - 199,999	0	0	0.0	0	0	0.0
200,000 - 299,999	1	1	0.0	8	9	-11.1
300,000 - 399,999	7	5	40.0	62	77	-19.5
400,000 - 499,999	15	11	36.4	143	191	-25.1
500,000 - 599,999	29	14	107.1	269	306	-12.1
600,000 - 699,999	23	28	-17.9	265	353	-24.9
700,000 - 799,999	16	14	14.3	167	198	-15.7
800,000 - 899,999	7	13	-46.2	125	122	2.5
900,000 - 999,999	8	12	-33.3	89	97	-8.2
1,000,000 - 1,249,999	7	4	75.0	79	69	14.5
1,250,000 - 1,499,999	5	7	-28.6	47	69	-31.9
1,500,000 +	3	1	200.0	46	45	2.2
TOTALS	121	110	10.0	1300	1536	-15.4

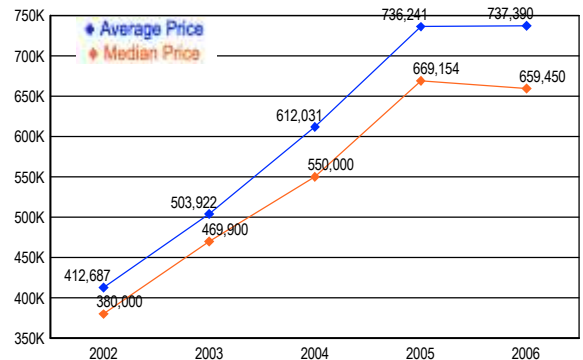
MARKET BY PRICE RANGE



SETTLEMENTS

Price Range	New This Month			Year-to-Date		
	2006	2005	% Change	2006	2005	% Change
0 - 149,999	0	0	0.0	0	0	0.0
150,000 - 199,999	0	0	0.0	0	0	0.0
200,000 - 299,999	0	1	-100.0	7	5	40.0
300,000 - 399,999	3	2	50.0	56	47	19.1
400,000 - 499,999	14	12	16.7	147	184	-20.1
500,000 - 599,999	23	23	0.0	249	284	-12.3
600,000 - 699,999	29	27	7.4	257	345	-25.5
700,000 - 799,999	10	16	-37.5	161	224	-28.1
800,000 - 899,999	11	18	-38.9	132	139	-5.0
900,000 - 999,999	3	7	-57.1	85	97	-12.4
1,000,000 - 1,249,999	9	7	28.6	84	97	-13.4
1,250,000 - 1,499,999	4	6	-33.3	45	53	-15.1
1,500,000 +	4	6	-33.3	39	47	-17.0
TOTALS	110	125	-12.0	1262	1522	-17.1

AVERAGE & MEDIAN PRICE



DATA SOURCE: Metropolitan Regional Information Systems, Inc. (MRIS)

NOTES: Properties not listed through this Multiple Listing Service are not reflected. The term "sales" represents ratified purchase contracts. Current year information is preliminary and subject to revision. Current year- to- date contract information may not equal the sum of the monthly contract totals reported in