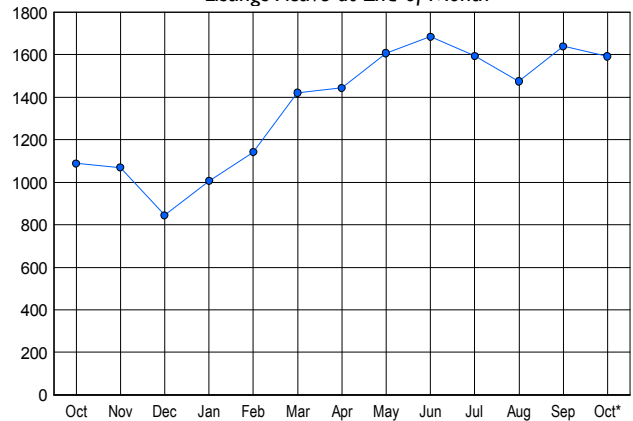


LISTINGS

Price Range	New This Month			Total Actives		
	2006	2005	% Change	2006	2005	% Change
0 - 149,999	17	23	-26.1	32	30	6.7
150,000 - 199,999	72	36	100.0	218	42	419.0
200,000 - 299,999	119	120	-0.8	327	151	116.6
300,000 - 399,999	125	182	-31.3	360	264	36.4
400,000 - 499,999	94	174	-46.0	255	208	22.6
500,000 - 599,999	56	108	-48.1	165	149	10.7
600,000 - 699,999	37	62	-40.3	87	99	-12.1
700,000 - 799,999	21	24	-12.5	50	48	4.2
800,000 - 899,999	14	14	0.0	31	28	10.7
900,000 - 999,999	3	13	-76.9	14	19	-26.3
1,000,000 - 1,249,999	6	8	-25.0	11	11	0.0
1,250,000 - 1,499,999	5	4	25.0	14	12	16.7
1,500,000 +	8	5	60.0	28	27	3.7
TOTALS	577	773	-25.4	1592	1088	46.3

INVENTORY TREND

Listings Active at End of Month

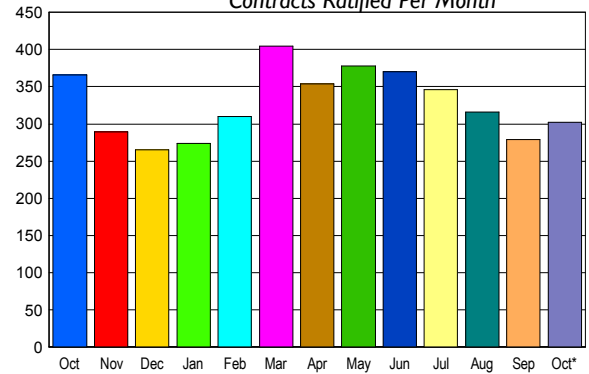


CONTRACTS

Price Range	New This Month			Year-To-Date		
	2006	2005	% Change	2006	2005	% Change
0 - 149,999	7	11	-36.4	79	142	-44.4
150,000 - 199,999	44	32	37.5	360	263	36.9
200,000 - 299,999	64	80	-20.0	735	826	-11.0
300,000 - 399,999	72	96	-25.0	840	941	-10.7
400,000 - 499,999	57	64	-10.9	509	674	-24.5
500,000 - 599,999	23	33	-30.3	309	402	-23.1
600,000 - 699,999	8	18	-55.6	142	197	-27.9
700,000 - 799,999	10	7	42.9	86	81	6.2
800,000 - 899,999	4	5	-20.0	45	39	15.4
900,000 - 999,999	2	7	-71.4	28	23	21.7
1,000,000 - 1,249,999	4	4	0.0	25	36	-30.6
1,250,000 - 1,499,999	4	2	100.0	20	18	11.1
1,500,000 +	3	7	-57.1	27	44	-38.6
TOTALS	302	366	-17.5	3205	3686	-13.0

SALES TREND

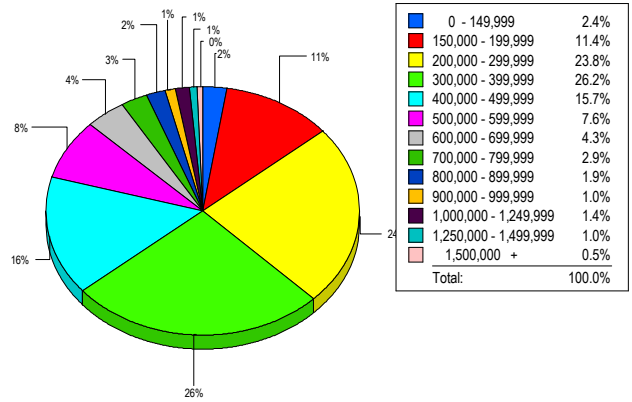
Contracts Ratified Per Month



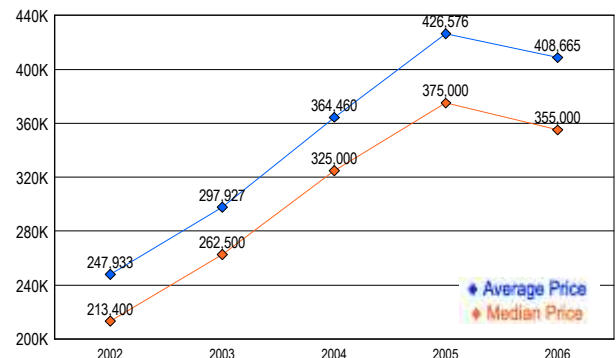
SETTLEMENTS

Price Range	New This Month			Year-To-Date		
	2006	2005	% Change	2006	2005	% Change
0 - 149,999	5	8	-37.5	77	149	-48.3
150,000 - 199,999	24	11	118.2	294	180	63.3
200,000 - 299,999	50	49	2.0	687	710	-3.2
300,000 - 399,999	55	71	-22.5	800	918	-12.9
400,000 - 499,999	33	53	-37.7	494	699	-29.3
500,000 - 599,999	16	28	-42.9	336	388	-13.4
600,000 - 699,999	9	18	-50.0	142	222	-36.0
700,000 - 799,999	6	8	-25.0	81	92	-12.0
800,000 - 899,999	4	0	400.0	39	36	8.3
900,000 - 999,999	2	3	-33.3	24	20	20.0
1,000,000 - 1,249,999	3	4	-25.0	30	28	7.1
1,250,000 - 1,499,999	2	0	200.0	14	19	-26.3
1,500,000 +	1	5	-80.0	31	35	-11.4
TOTALS	210	258	-18.6	3049	3496	-12.8

MARKET BY PRICE RANGE



AVERAGE & MEDIAN PRICE



DATA SOURCE: Metropolitan Regional Information Systems, Inc. (MRIS)

NOTES: Properties not listed through this Multiple Listing Service are not reflected. The term "sales" represents ratified purchase contracts. Current year information is preliminary and subject to revision.

AREA APPRAISAL SERVICES

Stephen Roehkind, SRA

LTORS

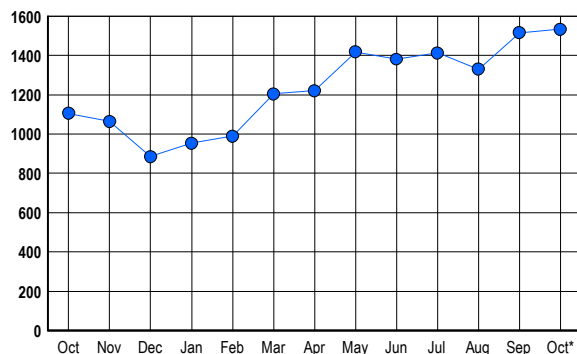
COPYRIGHT 2006

LISTINGS

Prices Range	New This Month			Total Actives		
	2006	2005	% Change	2006	2005	% Change
0 - 149,999	2	11	-81.8	2	7	-71.4
150,000 - 199,999	8	23	-65.2	17	23	-26.1
200,000 - 299,999	86	79	8.9	152	89	70.8
300,000 - 399,999	109	114	-4.4	277	184	50.5
400,000 - 499,999	83	116	-28.4	274	194	41.2
500,000 - 599,999	93	96	-3.1	219	144	52.1
600,000 - 699,999	56	74	-24.3	143	106	34.9
700,000 - 799,999	43	70	-38.6	96	84	14.3
800,000 - 899,999	48	32	50.0	81	40	102.5
900,000 - 999,999	27	32	-15.6	68	41	65.9
1,000,000 - 1,249,999	15	26	-42.3	39	38	2.6
1,250,000 - 1,499,999	21	25	-16.0	47	39	20.5
1,500,000 +	39	42	-7.1	119	116	2.6
TOTALS	630	740	-14.9	1534	1105	38.8

INVENTORY TREND

Listings Active at End of Month

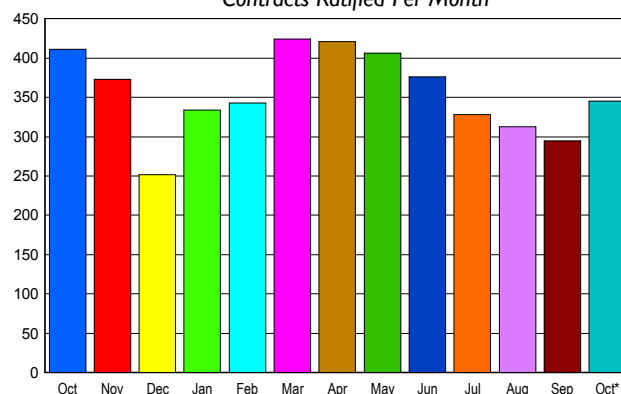


CONTRACTS

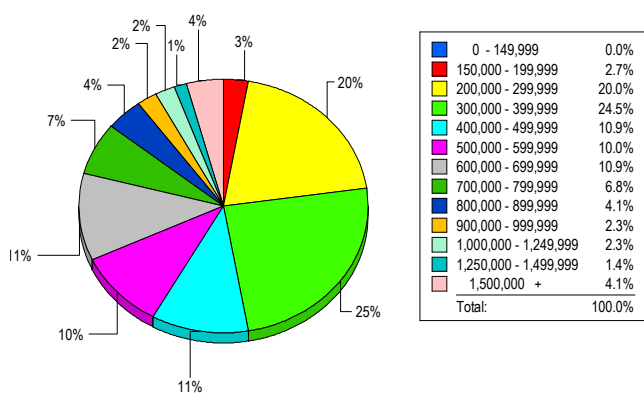
Price Range	New This Month			Year-To-Date		
	2006	2005	% Change	2006	2005	% Change
0 - 149,999	2	3	-33.3	19	68	-72.1
150,000 - 199,999	12	14	-14.3	83	217	-61.8
200,000 - 299,999	60	44	36.4	487	523	-6.9
300,000 - 399,999	68	66	3.0	664	794	-16.4
400,000 - 499,999	48	51	-5.9	493	653	-24.5
500,000 - 599,999	30	53	-43.4	365	424	-13.9
600,000 - 699,999	29	38	-23.7	329	427	-23.0
700,000 - 799,999	36	43	-16.3	309	351	-12.0
800,000 - 899,999	18	22	-18.2	166	227	-26.9
900,000 - 999,999	5	19	-73.7	108	162	-33.3
1,000,000 - 1,249,999	7	11	-36.4	117	106	10.4
1,250,000 - 1,499,999	12	14	-14.3	122	131	-6.9
1,500,000 +	18	33	-45.5	194	208	-6.7
TOTALS	345	411	-16.1	3456	4291	-19.5

SALES TREND

Contracts Ratified Per Month



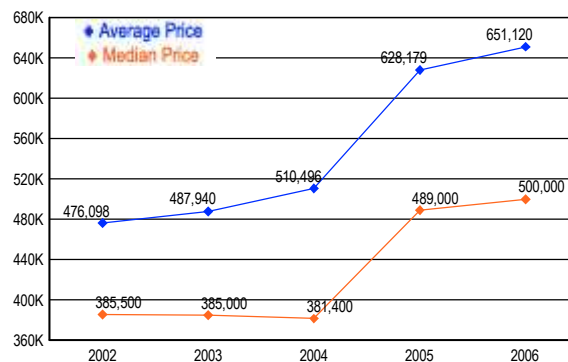
MARKET BY PRICE RANGE



SETTLEMENTS

Price Range	New This Month			Year-to-Date		
	2006	2005	% Change	2006	2005	% Change
0 - 149,999	0	4	-100.0	23	61	-62.3
150,000 - 199,999	6	15	-60.0	77	212	-63.7
200,000 - 299,999	44	40	10.0	445	523	-14.9
300,000 - 399,999	54	58	-6.9	630	713	-11.6
400,000 - 499,999	24	50	-52.0	480	639	-24.9
500,000 - 599,999	22	41	-46.3	355	407	-12.8
600,000 - 699,999	24	35	-31.4	314	358	-12.3
700,000 - 799,999	15	28	-46.4	297	332	-10.5
800,000 - 899,999	9	26	-65.4	183	265	-30.9
900,000 - 999,999	5	11	-54.5	111	162	-31.5
1,000,000 - 1,249,999	5	11	-54.5	147	153	-3.9
1,250,000 - 1,499,999	3	8	-62.5	97	128	-24.2
1,500,000 +	9	11	-18.2	190	186	2.2
TOTALS	220	338	-34.9	3349	4139	-19.1

AVERAGE & MEDIAN PRICE



DATA SOURCE: Metropolitan Regional Information Systems, Inc. (MRIS)

NOTES: Properties not listed through this Multiple Listing Service are not reflected. The term "sales" represents ratified purchase contracts. Current year information is preliminary and subject to revision.



AREA APPRAISAL SERVICES

Stephen Roehkind, SRA

MONTGOMERY COUNTY

Residential Market Report



HOUSING REPORT

CONDO & COOPS

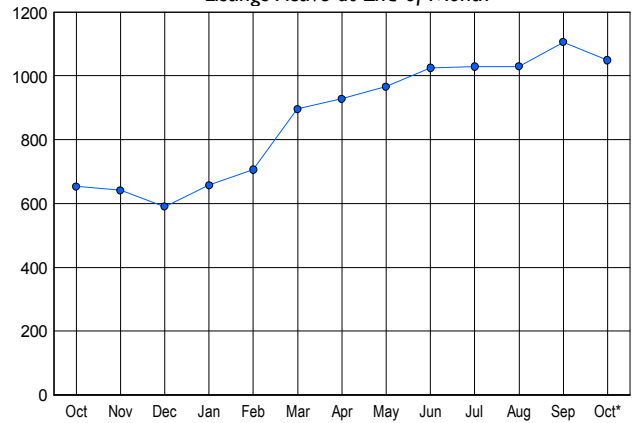
October 2006

LISTINGS

Price Range	New This Month			Total Actives		
	2006	2005	% Change	2006	2005	% Change
0 - 149,999	8	8	0.0	14	25	-44.0
150,000 - 199,999	32	39	-17.9	76	43	76.7
200,000 - 299,999	168	230	-27.0	409	279	46.6
300,000 - 399,999	111	123	-9.8	300	191	57.1
400,000 - 499,999	39	53	-26.4	122	86	41.9
500,000 - 599,999	20	19	5.3	61	12	408.3
600,000 - 699,999	7	2	250.0	27	6	350.0
700,000 - 799,999	1	3	-66.7	15	4	275.0
800,000 - 899,999	0	0	0.0	8	1	700.0
900,000 - 999,999	3	0	300.0	4	1	300.0
1,000,000 - 1,249,999	0	1	-100.0	1	2	-50.0
1,250,000 - 1,499,999	2	1	100.0	6	1	500.0
1,500,000 +	2	3	-33.3	6	2	200.0
TOTALS	393	482	-18.5	1049	653	60.6

INVENTORY TREND

Listings Active at End of Month

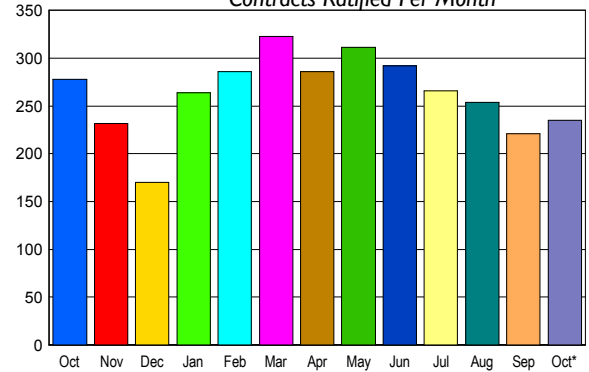


CONTRACTS

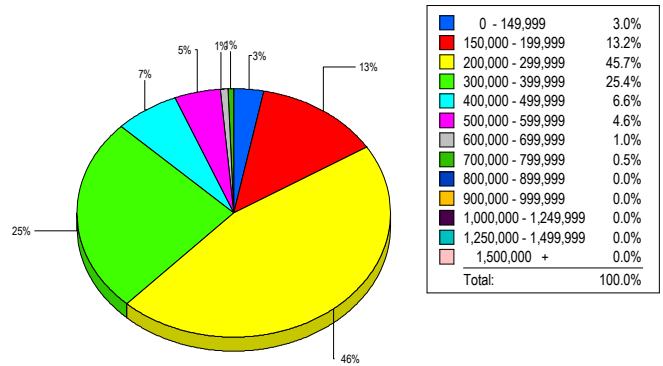
Price Range	New This Month			Year-To-Date		
	2006	2005	% Change	2006	2005	% Change
0 - 149,999	6	3	100.0	43	99	-56.6
150,000 - 199,999	28	27	3.7	271	478	-43.3
200,000 - 299,999	104	128	-18.8	1,205	1,422	-15.3
300,000 - 399,999	69	70	-1.4	740	716	3.4
400,000 - 499,999	14	26	-46.2	223	303	-26.4
500,000 - 599,999	7	15	-53.3	82	93	-11.8
600,000 - 699,999	3	2	50.0	31	46	-32.6
700,000 - 799,999	3	3	0.0	20	17	17.6
800,000 - 899,999	0	2	-100.0	12	15	-20.0
900,000 - 999,999	1	1	0.0	8	4	100.0
1,000,000 - 1,249,999	0	0	0.0	2	2	0.0
1,250,000 - 1,499,999	0	0	0.0	2	4	-50.0
1,500,000 +	0	1	-100.0	9	12	-25.0
TOTALS	235	278	-15.5	2648	3211	-17.5

SALES TREND

Contracts Ratified Per Month



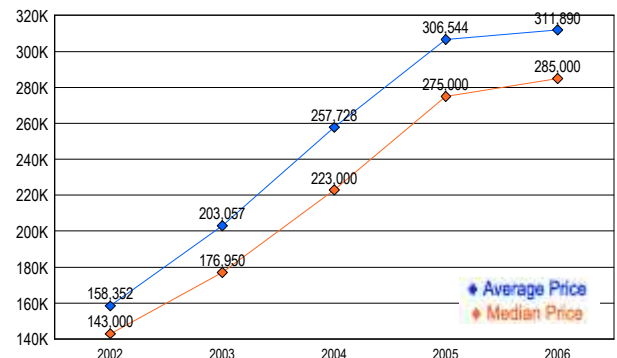
MARKET BY PRICE RANGE



SETTLEMENTS

Price Range	New This Month			Year-To-Date		
	2006	2005	% Change	2006	2005	% Change
0 - 149,999	6	3	100.0	42	99	-57.6
150,000 - 199,999	26	22	18.2	237	455	-47.9
200,000 - 299,999	90	124	-27.4	1,189	1,345	-11.6
300,000 - 399,999	50	62	-19.4	712	745	-4.4
400,000 - 499,999	13	33	-60.6	232	317	-26.8
500,000 - 599,999	9	12	-25.0	79	91	-13.2
600,000 - 699,999	2	2	0.0	30	51	-41.2
700,000 - 799,999	1	2	-50.0	19	20	-5.0
800,000 - 899,999	0	0	0.0	12	12	0.0
900,000 - 999,999	0	0	0.0	8	2	300.0
1,000,000 - 1,249,999	0	0	0.0	2	2	0.0
1,250,000 - 1,499,999	0	0	0.0	0	4	-100.0
1,500,000 +	0	2	-100.0	9	13	-30.8
TOTALS	197	262	-24.8	2571	3156	-18.5

AVERAGE & MEDIAN PRICE



DATA SOURCE: Metropolitan Regional Information Systems, Inc. (MRIS)

NOTES: Properties not listed through this Multiple Listing Service are not reflected. The term "sales" represents ratified purchase contracts. Current year information is preliminary and subject to revision.

AREA APPRAISAL SERVICES

Stephen Roehkind, SRA

LTORS

COPYRIGHT 2006

MONTGOMERY COUNTY Residential Market Report



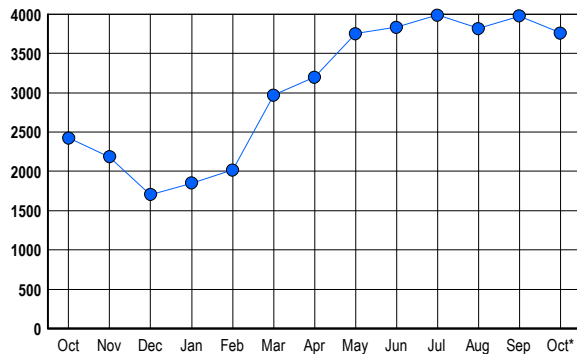
HOUSING REPORT Single Family Homes October 2006

LISTINGS

Prices Range	New This Month			Total Actives		
	2006	2005	% Change	2006	2005	% Change
0 - 149,999	0	8	-100.0	0	16	-100.0
150,000 - 199,999	3	3	0.0	2	5	-60.0
200,000 - 299,999	71	106	-33.0	148	104	42.3
300,000 - 399,999	276	335	-17.6	616	393	56.7
400,000 - 499,999	322	366	-12.0	813	444	83.1
500,000 - 599,999	240	252	-4.8	643	356	80.6
600,000 - 699,999	143	192	-25.5	429	292	46.9
700,000 - 799,999	64	114	-43.9	242	184	31.5
800,000 - 899,999	65	76	-14.5	196	115	70.4
900,000 - 999,999	38	37	2.7	120	66	81.8
1,000,000 - 1,249,999	46	56	-17.9	145	91	59.3
1,250,000 - 1,499,999	51	53	-3.8	148	123	20.3
1,500,000 +	68	71	-4.2	256	237	8.0
TOTALS	1387	1669	-16.9	3758	2426	54.9

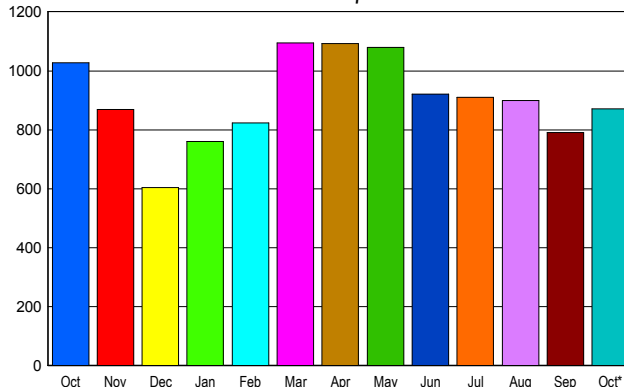
INVENTORY TREND

Listings Active at End of Month



SALES TREND

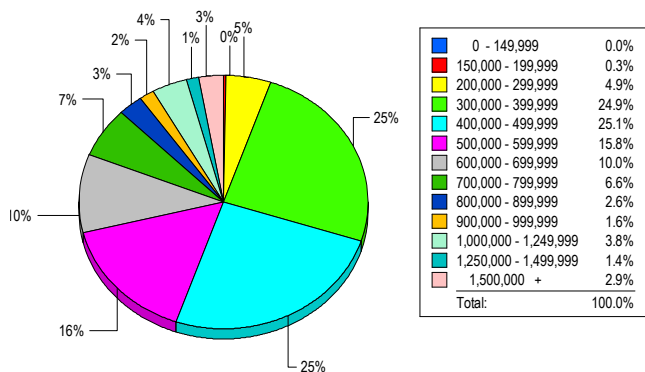
Contracts Ratified Per Month



CONTRACTS

Price Range	New This Month			Year-To-Date		
	2006	2005	% Change	2006	2005	% Change
0 - 149,999	0	0	0.0	0	5	-100.0
150,000 - 199,999	3	1	200.0	6	23	-73.9
200,000 - 299,999	57	81	-29.6	465	1,101	-57.8
300,000 - 399,999	198	250	-20.8	2,123	2,947	-28.0
400,000 - 499,999	234	241	-2.9	2,154	2,640	-18.4
500,000 - 599,999	114	141	-19.1	1,328	1,436	-7.5
600,000 - 699,999	85	98	-13.3	952	1,157	-17.7
700,000 - 799,999	50	78	-35.9	601	780	-22.9
800,000 - 899,999	42	35	20.0	386	478	-19.2
900,000 - 999,999	16	29	-44.8	235	276	-14.9
1,000,000 - 1,249,999	31	27	14.8	250	288	-13.2
1,250,000 - 1,499,999	17	23	-26.1	245	237	3.4
1,500,000 +	24	24	0.0	284	260	9.2
TOTALS	871	1028	-15.3	9029	11628	-22.4

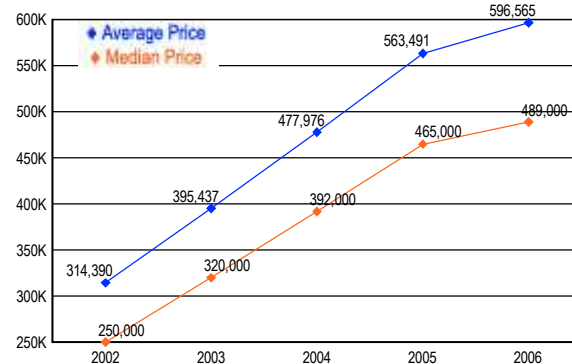
MARKET BY PRICE RANGE



SETTLEMENTS

Price Range	New This Month			Year-to-Date		
	2006	2005	% Change	2006	2005	% Change
0 - 149,999	0	0	0.0	0	5	-100.0
150,000 - 199,999	2	0	200.0	4	21	-81.0
200,000 - 299,999	36	67	-46.3	400	1,002	-60.1
300,000 - 399,999	181	249	-27.3	2,077	2,767	-24.9
400,000 - 499,999	183	257	-28.8	2,117	2,614	-19.0
500,000 - 599,999	115	144	-20.1	1,311	1,455	-9.9
600,000 - 699,999	73	102	-28.4	918	1,143	-19.7
700,000 - 799,999	48	62	-22.6	607	735	-17.4
800,000 - 899,999	19	29	-34.5	362	459	-21.1
900,000 - 999,999	12	21	-42.9	216	285	-24.2
1,000,000 - 1,249,999	28	21	33.3	276	335	-17.6
1,250,000 - 1,499,999	10	19	-47.4	199	215	-7.4
1,500,000 +	21	16	31.3	276	246	12.2
TOTALS	728	987	-26.2	8763	11282	-22.3

AVERAGE & MEDIAN PRICE



DATA SOURCE: Metropolitan Regional Information Systems, Inc. (MRIS)

NOTES: Properties not listed through this Multiple Listing Service are not reflected. The term "sales" represents ratified purchase contracts. Current year information is preliminary and subject to revision.



AREA APPRAISAL SERVICES

Stephen Roehkind, SRA

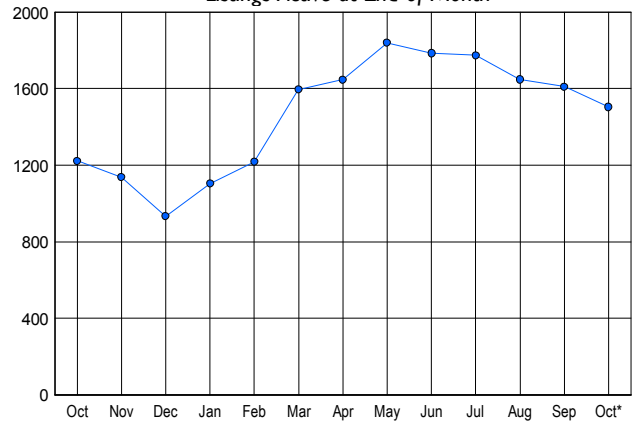
TORS COPYRIGHT 2006

LISTINGS

Price Range	New This Month			Total Actives		
	2006	2005	% Change	2006	2005	% Change
0 - 149,999	1	11	-90.9	4	21	-81.0
150,000 - 199,999	26	17	52.9	73	19	284.2
200,000 - 299,999	208	291	-28.5	634	404	56.9
300,000 - 399,999	170	336	-49.4	513	526	-2.5
400,000 - 499,999	53	84	-36.9	180	154	16.9
500,000 - 599,999	12	23	-47.8	46	59	-22.0
600,000 - 699,999	7	12	-41.7	21	13	61.5
700,000 - 799,999	2	0	200.0	8	3	166.7
800,000 - 899,999	2	4	-50.0	11	9	22.2
900,000 - 999,999	2	0	200.0	3	4	-25.0
1,000,000 - 1,249,999	2	2	0.0	4	2	100.0
1,250,000 - 1,499,999	1	0	100.0	5	5	0.0
1,500,000 +	0	0	0.0	2	3	-33.3
TOTALS	486	780	-37.7	1504	1222	23.1

INVENTORY TREND

Listings Active at End of Month

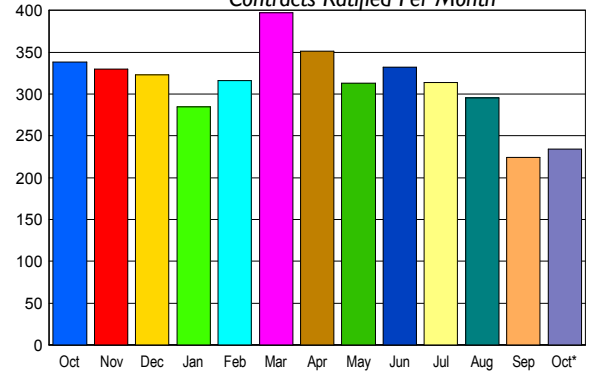


CONTRACTS

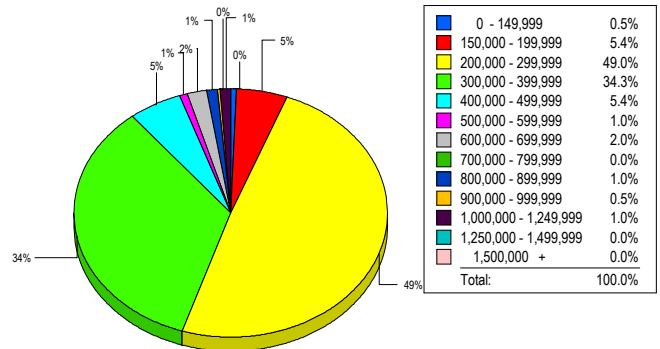
Price Range	New This Month			Year-To-Date		
	2006	2005	% Change	2006	2005	% Change
0 - 149,999	1	4	-75.0	12	26	-53.8
150,000 - 199,999	12	15	-20.0	123	257	-52.1
200,000 - 299,999	119	148	-19.6	1,352	1,727	-21.7
300,000 - 399,999	77	132	-41.7	1,174	1,607	-26.9
400,000 - 499,999	13	28	-53.6	255	361	-29.4
500,000 - 599,999	4	5	-20.0	51	83	-38.6
600,000 - 699,999	4	3	33.3	23	13	76.9
700,000 - 799,999	0	0	0.0	7	3	133.3
800,000 - 899,999	2	1	100.0	11	7	57.1
900,000 - 999,999	1	0	100.0	4	2	100.0
1,000,000 - 1,249,999	1	1	0.0	3	4	-25.0
1,250,000 - 1,499,999	0	0	0.0	0	0	0.0
1,500,000 +	0	1	-100.0	2	1	100.0
TOTALS	234	338	-30.8	3017	4091	-26.3

SALES TREND

Contracts Ratified Per Month



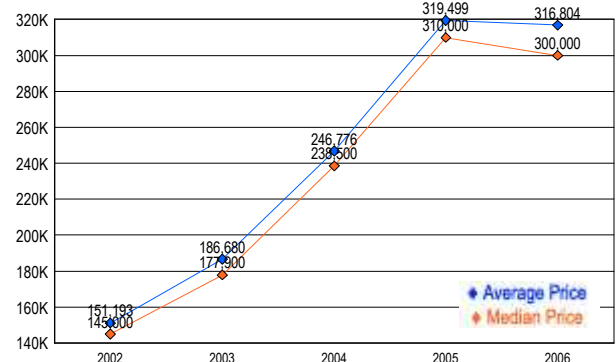
MARKET BY PRICE RANGE



SETTLEMENTS

Price Range	New This Month			Year-To-Date		
	2006	2005	% Change	2006	2005	% Change
0 - 149,999	1	0	100.0	13	21	-38.1
150,000 - 199,999	11	3	266.7	115	226	-49.1
200,000 - 299,999	100	106	-5.7	1,332	1,625	-18.0
300,000 - 399,999	70	138	-49.3	1,194	1,672	-28.6
400,000 - 499,999	11	24	-54.2	284	403	-29.5
500,000 - 599,999	2	3	-33.3	45	79	-43.0
600,000 - 699,999	4	3	33.3	21	15	40.0
700,000 - 799,999	0	0	0.0	9	4	125.0
800,000 - 899,999	2	1	100.0	10	5	100.0
900,000 - 999,999	1	0	100.0	2	2	0.0
1,000,000 - 1,249,999	2	1	100.0	3	3	0.0
1,250,000 - 1,499,999	0	0	0.0	2	1	100.0
1,500,000 +	0	0	0.0	1	0	-100.0
TOTALS	204	279	-26.9	3031	4056	-25.3

AVERAGE & MEDIAN PRICE



DATA SOURCE: Metropolitan Regional Information Systems, Inc. (MRIS)

NOTES: Properties not listed through this Multiple Listing Service are not reflected. The term "sales" represents ratified purchase contracts. Current year information is preliminary and subject to revision.

AREA APPRAISAL SERVICES

Stephen Roehkind, SRA

LTORS

COPYRIGHT 2006

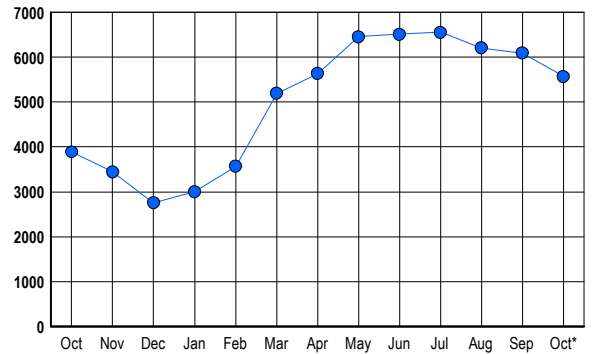


LISTINGS

Prices Range	New This Month			Total Actives		
	2006	2005	% Change	2006	2005	% Change
0 - 149,999	8	11	-27.3	2	22	-90.9
150,000 - 199,999	0	0	0.0	3	0	300.0
200,000 - 299,999	12	9	33.3	45	16	181.3
300,000 - 399,999	250	279	-10.4	677	332	103.9
400,000 - 499,999	421	538	-21.7	1,240	848	46.2
500,000 - 599,999	360	493	-27.0	1,125	725	55.2
600,000 - 699,999	210	355	-40.8	726	584	24.3
700,000 - 799,999	124	195	-36.4	428	360	18.9
800,000 - 899,999	77	148	-48.0	292	245	19.2
900,000 - 999,999	49	70	-30.0	193	151	27.8
1,000,000 - 1,249,999	62	74	-16.2	229	178	28.7
1,250,000 - 1,499,999	47	50	-6.0	216	154	40.3
1,500,000 +	84	82	2.4	390	276	41.3
TOTALS	1704	2304	-26.0	5566	3891	43.0

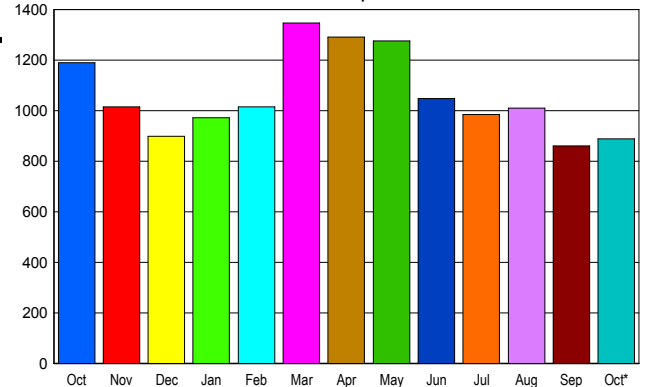
INVENTORY TREND

Listings Active at End of Month



SALES TREND

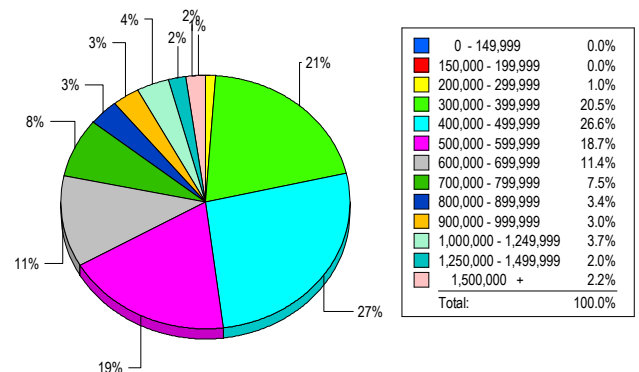
Contracts Ratified Per Month



CONTRACTS

Price Range	New This Month			Year-To-Date		
	2006	2005	% Change	2006	2005	% Change
0 - 149,999	0	0	0.0	0	4	-100.0
150,000 - 199,999	0	0	0.0	1	10	-90.0
200,000 - 299,999	11	4	175.0	92	262	-64.9
300,000 - 399,999	168	182	-7.7	1,651	2,622	-37.0
400,000 - 499,999	243	310	-21.6	2,757	3,937	-30.0
500,000 - 599,999	193	276	-30.1	2,220	3,126	-29.0
600,000 - 699,999	103	169	-39.1	1,465	2,054	-28.7
700,000 - 799,999	43	81	-46.9	756	1,132	-33.2
800,000 - 899,999	34	59	-42.4	490	704	-30.4
900,000 - 999,999	21	35	-40.0	275	423	-35.0
1,000,000 - 1,249,999	33	34	-2.9	293	347	-15.6
1,250,000 - 1,499,999	19	21	-9.5	222	295	-24.7
1,500,000 +	22	19	15.8	246	273	-9.9
TOTALS	890	1190	-25.2	10468	15189	-31.1

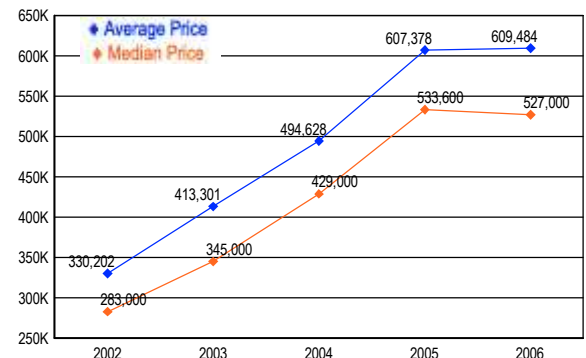
MARKET BY PRICE RANGE



SETTLEMENTS

Price Range	New This Month			Year-to-Date		
	2006	2005	% Change	2006	2005	% Change
0 - 149,999	0	0	0.0	0	6	-100.0
150,000 - 199,999	0	0	0.0	2	7	-71.4
200,000 - 299,999	8	6	33.3	92	225	-59.1
300,000 - 399,999	167	138	21.0	1,564	2,261	-30.8
400,000 - 499,999	216	280	-22.9	2,713	3,863	-29.8
500,000 - 599,999	152	236	-35.6	2,221	3,178	-30.1
600,000 - 699,999	93	151	-38.4	1,432	2,160	-33.7
700,000 - 799,999	61	86	-29.1	763	1,187	-35.7
800,000 - 899,999	28	50	-44.0	479	706	-32.2
900,000 - 999,999	24	31	-22.6	267	419	-36.3
1,000,000 - 1,249,999	30	30	0.0	319	381	-16.3
1,250,000 - 1,499,999	16	20	-20.0	179	262	-31.7
1,500,000 +	18	23	-21.7	220	270	-18.5
TOTALS	813	1051	-22.6	10251	14925	-31.3

AVERAGE & MEDIAN PRICE



DATA SOURCE: Metropolitan Regional Information Systems, Inc. (MRIS)

NOTES: Properties not listed through this Multiple Listing Service are not reflected. The term "sales" represents ratified purchase contracts. Current year information is preliminary and subject to revision.



AREA APPRAISAL SERVICES

Stephen Roehkind, SRA

ARLINGTON COUNTY

Residential Market Report



HOUSING REPORT

CONDO & COOPS

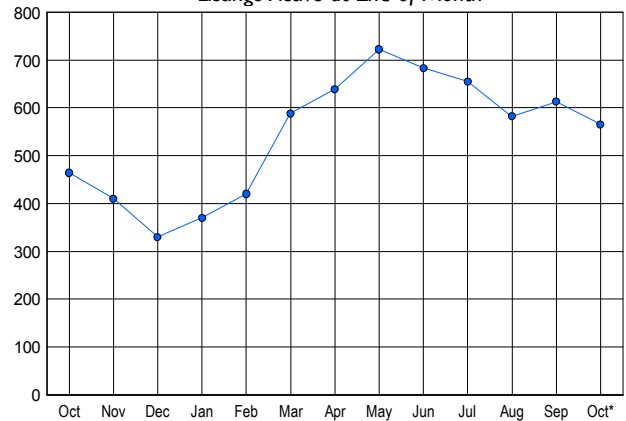
October 2006

LISTINGS

Price Range	New This Month			Total Actives		
	2006	2005	% Change	2006	2005	% Change
0 - 149,999	1	2	-50.0	1	11	-90.9
150,000 - 199,999	8	8	0.0	29	17	70.6
200,000 - 299,999	43	56	-23.2	131	102	28.4
300,000 - 399,999	60	92	-34.8	165	135	22.2
400,000 - 499,999	36	70	-48.6	93	103	-9.7
500,000 - 599,999	22	31	-29.0	56	45	24.4
600,000 - 699,999	7	17	-58.8	29	24	20.8
700,000 - 799,999	0	8	-100.0	8	9	-11.1
800,000 - 899,999	4	2	100.0	14	8	75.0
900,000 - 999,999	4	0	400.0	11	2	450.0
1,000,000 - 1,249,999	4	0	400.0	12	1	1100.0
1,250,000 - 1,499,999	0	1	-100.0	8	4	100.0
1,500,000 +	1	0	100.0	8	3	166.7
TOTALS	190	287	-33.8	565	464	21.8

INVENTORY TREND

Listings Active at End of Month

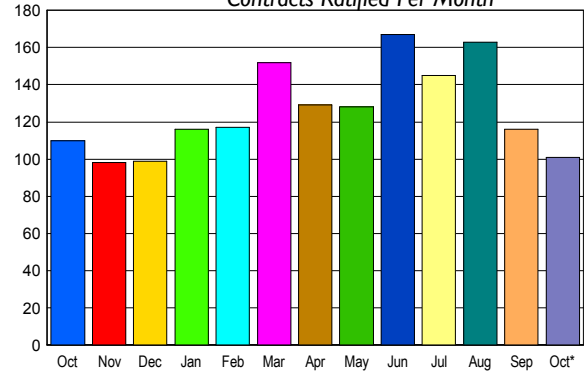


CONTRACTS

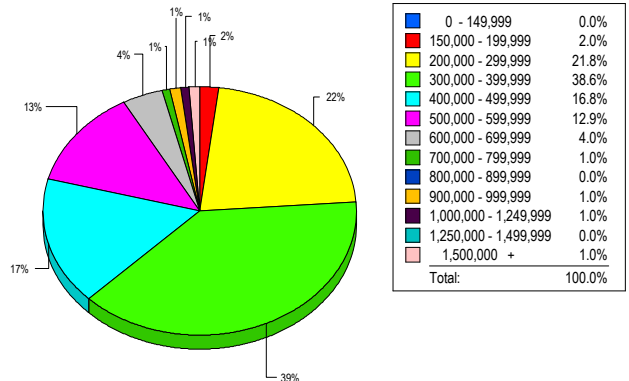
Price Range	New This Month			Year-To-Date		
	2006	2005	% Change	2006	2005	% Change
0 - 149,999	0	0	0.0	10	49	-79.6
150,000 - 199,999	8	3	166.7	64	84	-23.8
200,000 - 299,999	21	20	5.0	285	329	-13.4
300,000 - 399,999	38	32	18.8	476	435	9.4
400,000 - 499,999	22	41	-46.3	294	374	-21.4
500,000 - 599,999	7	8	-12.5	123	137	-10.2
600,000 - 699,999	5	5	0.0	59	55	7.3
700,000 - 799,999	0	1	-100.0	9	19	-52.6
800,000 - 899,999	0	0	0.0	4	5	-20.0
900,000 - 999,999	0	0	0.0	6	3	100.0
1,000,000 - 1,249,999	0	0	0.0	2	2	0.0
1,250,000 - 1,499,999	0	0	0.0	4	1	300.0
1,500,000 +	0	0	0.0	0	1	-100.0
TOTALS	101	110	-8.2	1336	1494	-10.6

SALES TREND

Contracts Ratified Per Month



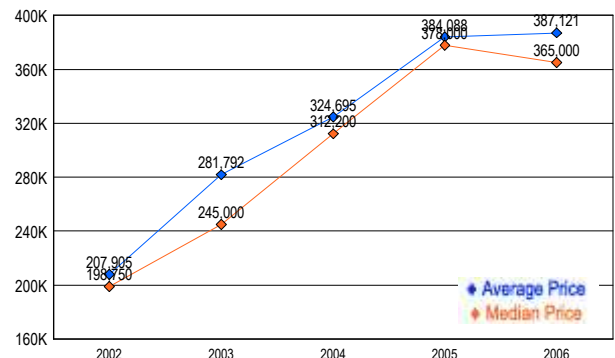
MARKET BY PRICE RANGE



SETTLEMENTS

Price Range	New This Month			Year-To-Date		
	2006	2005	% Change	2006	2005	% Change
0 - 149,999	0	1	-100.0	13	51	-74.5
150,000 - 199,999	2	3	-33.3	61	79	-22.8
200,000 - 299,999	22	17	29.4	281	300	-6.3
300,000 - 399,999	39	40	-2.5	468	426	9.9
400,000 - 499,999	17	33	-48.5	277	388	-28.6
500,000 - 599,999	13	10	30.0	124	147	-15.6
600,000 - 699,999	4	9	-55.6	55	62	-11.3
700,000 - 799,999	1	1	0.0	13	23	-43.5
800,000 - 899,999	0	0	0.0	6	5	20.0
900,000 - 999,999	1	0	100.0	5	5	0.0
1,000,000 - 1,249,999	1	0	100.0	2	2	0.0
1,250,000 - 1,499,999	0	0	0.0	2	1	100.0
1,500,000 +	1	0	100.0	4	0	-400.0
TOTALS	101	114	-11.4	1311	1489	-12.0

AVERAGE & MEDIAN PRICE



DATA SOURCE: Metropolitan Regional Information Systems, Inc. (MRIS)

NOTES: Properties not listed through this Multiple Listing Service are not reflected. The term "sales" represents ratified purchase contracts. Current year information is preliminary and subject to revision.



AREA APPRAISAL SERVICES

Stephen Roehkind, SRA

LTORS

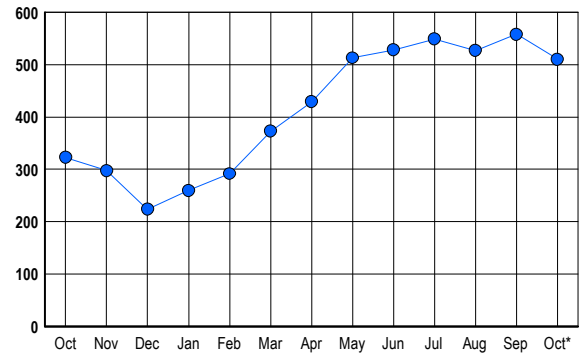
COPYRIGHT 2006

LISTINGS

Prices Range	New This Month			Total Actives		
	2006	2005	% Change	2006	2005	% Change
0 - 149,999	0	2	-100.0	0	2	-100.0
150,000 - 199,999	0	0	0.0	0	0	0.0
200,000 - 299,999	0	1	-100.0	1	0	100.0
300,000 - 399,999	7	6	16.7	19	11	72.7
400,000 - 499,999	17	16	6.3	43	19	126.3
500,000 - 599,999	40	34	17.6	88	38	131.6
600,000 - 699,999	42	58	-27.6	80	72	11.1
700,000 - 799,999	26	35	-25.7	79	46	71.7
800,000 - 899,999	13	18	-27.8	41	21	95.2
900,000 - 999,999	10	14	-28.6	23	25	-8.0
1,000,000 - 1,249,999	17	15	13.3	44	25	76.0
1,250,000 - 1,499,999	7	18	-61.1	39	37	5.4
1,500,000 +	7	12	-41.7	53	27	96.3
TOTALS	186	229	-18.8	510	323	57.9

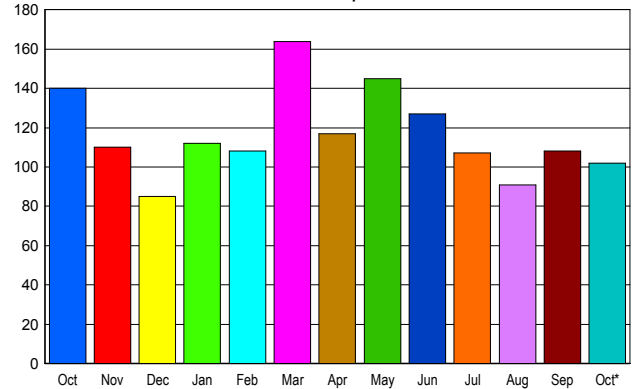
INVENTORY TREND

Listings Active at End of Month



SALES TREND

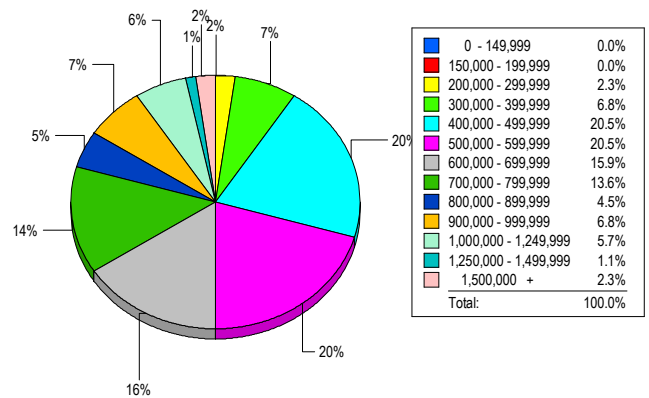
Contracts Ratified Per Month



CONTRACTS

Price Range	New This Month			Year-To-Date		
	2006	2005	% Change	2006	2005	% Change
0 - 149,999	0	0	0.0	0	0	0.0
150,000 - 199,999	0	0	0.0	0	0	0.0
200,000 - 299,999	1	2	-50.0	6	8	-25.0
300,000 - 399,999	2	5	-60.0	56	72	-22.2
400,000 - 499,999	8	12	-33.3	126	181	-30.4
500,000 - 599,999	29	30	-3.3	238	293	-18.8
600,000 - 699,999	27	38	-28.9	242	330	-26.7
700,000 - 799,999	11	13	-15.4	152	183	-16.9
800,000 - 899,999	9	15	-40.0	113	108	4.6
900,000 - 999,999	5	4	25.0	81	85	-4.7
1,000,000 - 1,249,999	5	5	0.0	73	64	14.1
1,250,000 - 1,499,999	2	9	-77.8	40	63	-36.5
1,500,000 +	3	7	-57.1	42	43	-2.3
TOTALS	102	140	-27.1	1169	1430	-18.3

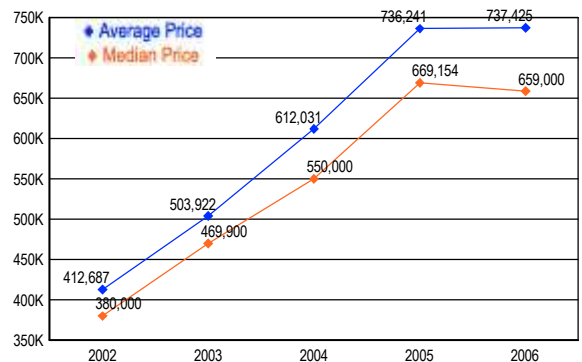
MARKET BY PRICE RANGE



SETTLEMENTS

Price Range	New This Month			Year-to-Date		
	2006	2005	% Change	2006	2005	% Change
0 - 149,999	0	0	0.0	0	0	0.0
150,000 - 199,999	0	0	0.0	0	0	0.0
200,000 - 299,999	2	2	0.0	7	4	75.0
300,000 - 399,999	6	2	200.0	53	45	17.8
400,000 - 499,999	18	10	80.0	132	171	-22.8
500,000 - 599,999	18	23	-21.7	225	258	-12.8
600,000 - 699,999	14	30	-53.3	228	317	-28.1
700,000 - 799,999	12	17	-29.4	151	204	-26.0
800,000 - 899,999	4	14	-71.4	116	121	-4.1
900,000 - 999,999	6	5	20.0	82	89	-7.9
1,000,000 - 1,249,999	5	8	-37.5	75	87	-13.8
1,250,000 - 1,499,999	1	3	-66.7	39	47	-17.0
1,500,000 +	2	3	-33.3	35	41	-14.6
TOTALS	88	117	-24.8	1143	1384	-17.4

AVERAGE & MEDIAN PRICE



DATA SOURCE: Metropolitan Regional Information Systems, Inc. (MRIS)

NOTES: Properties not listed through this Multiple Listing Service are not reflected. The term "sales" represents ratified purchase contracts. Current year information is preliminary and subject to revision.



AREA APPRAISAL SERVICES

Stephen Roehkind, SRA